

## YOUR RDF CHECKLIST

- Do I have relevant approvals in place?
- Have I targeted appropriate wastes?
- Does the waste need further processing and sorting?
- Do I have an immediate and specific market for the RDF?
- Have I conducted sufficient sampling and assessment to determine risks?
- Is the RDF fit for purpose?
- Do I have appropriate quality assurance procedures to ensure a consistent RDF product?
- Have I implemented appropriate environmental, human health and safety procedures and controls for production and combustion of RDF?
- Have I put materials flow controls in place to avoid excessive accumulation?
- Have I contacted the EPA?
- Have I read the Refuse Derived Fuel Standard?

Go to [www.epa.sa.gov.au/standard\\_rdf.pdf](http://www.epa.sa.gov.au/standard_rdf.pdf).

More information on Waste Management can be found at [www.epa.sa.gov.au/environmental\\_info/waste](http://www.epa.sa.gov.au/environmental_info/waste)

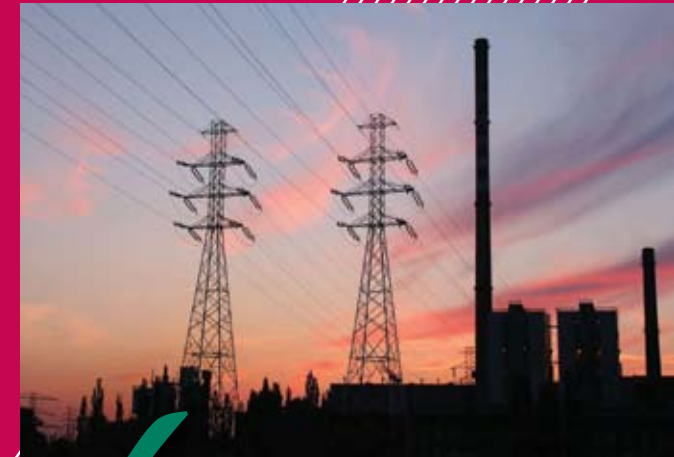


Use of Refuse Derived Fuel can reduce reliance on fossil fuels.



for more information please contact:  
Environment Protection Authority  
[www.epa.sa.gov.au](http://www.epa.sa.gov.au)

GPO Box 2607 Adelaide SA 5001  
250 Victoria Square Adelaide SA  
T (08) 8204 2000 F (08) 8124 4670  
Country areas 1800 623 445



Refuse Derived Fuel can be used in industrial processes as a supplement or replacement for traditional power.

## Refuse Derived Fuel

### Production and Combustion

How do I prevent harm to the environment and human health when producing and combusting Refuse Derived Fuel (RDF)?

The EPA Standard for Refuse Derived Fuel provides information to help you understand the potential risks and your legal obligations for the production and combustion of RDF.

Environment Protection Authority  
[www.epa.sa.gov.au](http://www.epa.sa.gov.au)



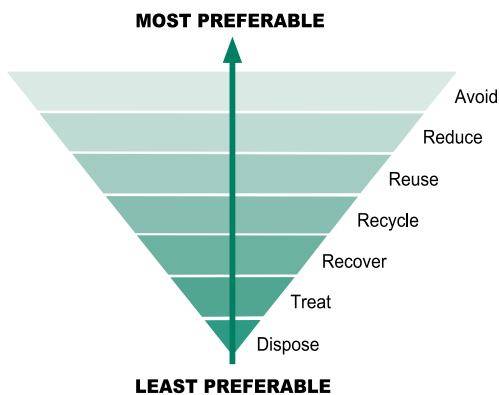


This waste contains a large proportion of material that may be suitable for production of RDF (eg timber) once recyclables are removed and unsuitable wastes are disposed of to landfill.

### WHAT IS WASTE?

- Waste includes leftover, unwanted, surplus materials whether of value or not.
- To be suitable for reuse, waste needs to be processed into a recycled product that meets an appropriate standard.

### ARE YOU SUPPORTING THE WASTE HIERARCHY?



Specific wastes otherwise destined for landfill and of high calorific value (eg used tyres) may be suitable for processing and production of RDF.

### REFUSE DERIVED FUEL

An RDF:

- is produced from specific wastes otherwise destined for landfill
- has sufficient net calorific value to supplement or replace a standard fuel in an industrial process
- meets an approved, consistent and fit for purpose specification.

### PRODUCING AND USING RDF

When producing and using RDF you need to:

- target and segregate waste: include high calorific value waste and avoid unsuitable and recyclable wastes



This mixed waste includes a large amount of household rubbish and is unlikely to be suitable for use in a RDF. It should be under cover and sorted to recover recyclables and the remaining waste disposed of to landfill.

- ensure there is an immediate market available
- produce RDF that meets the requirements of the Standard
- ensure pollution controls are implemented
- ensure use of the RDF does not reduce the efficiency of combustion or overall performance of the industrial facility.

### LEGAL OBLIGATIONS

It is important to be aware of the legal obligations associated with the production and combustion of RDF including:

- having authorisation to receive, store, treat or process waste including the production of RDF products
- having approval for the combustion of RDF in an industrial facility prior to beginning the activity, including pilot trials
- conducting activities such that they do not cause harm to the environment or human health
- meeting your environmental duty.

To fully understand the risks and requirements for production and use of Refuse Derived Fuel, refer to the RDF Standard available at [https://www.gov.uk/government/uploads/system/uploads/attachment\\_data/file/441422/rdf-standard-2017.pdf](https://www.gov.uk/government/uploads/system/uploads/attachment_data/file/441422/rdf-standard-2017.pdf)