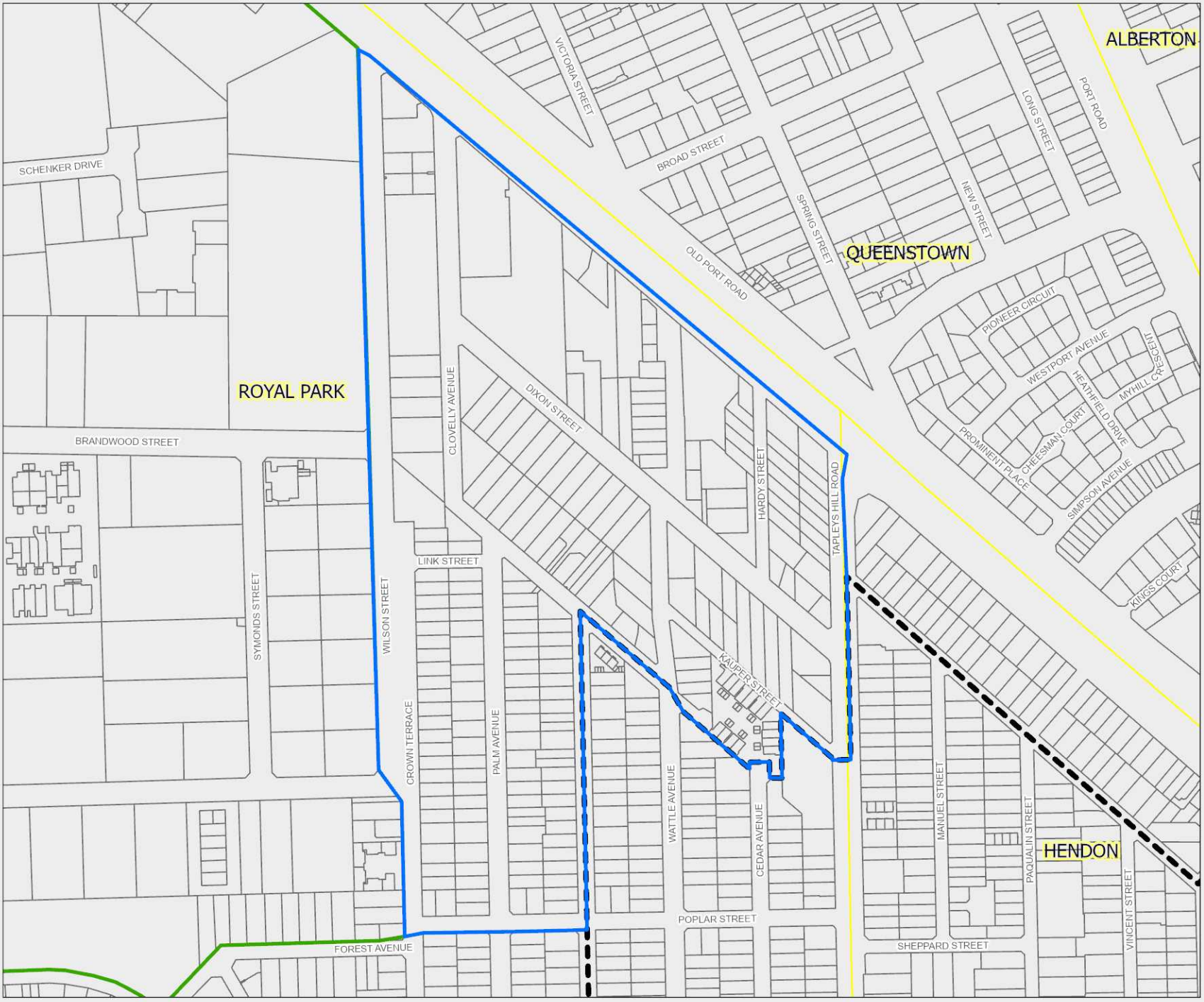


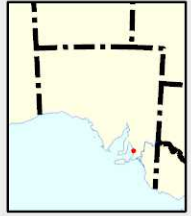


Royal Park EPA Assessment Area



-  Royal Park EPA Assessment Area
-  Hendon GPA
-  West Lakes EPA Assessment Area
-  Parcels
-  Suburbs



Produced by Digital, Systems and Information
Environment Protection Authority
GPO Box 2607 Adelaide SA 5001
www.epa.sa.gov.au

Data Source DEW, EPA
Compiled 30/03/2023
Projection Lambert Conformal Conic
Datum Geocentric Datum of Australia, 2020

© Copyright Environment Protection Authority 2023. All Rights Reserved. All works and information displayed are subject to Copyright. For the reproduction or publication beyond that permitted by the Copyright Act 1968 (Cwth) written permission must be sought from the Department.

Although every effort has been made to ensure the accuracy of the information displayed, the Department, its agents, officers and employees make no representations, either express or implied, that the information displayed is accurate or fit for any purpose and expressly disclaims all liability for loss or damage arising from reliance upon the information displayed.

