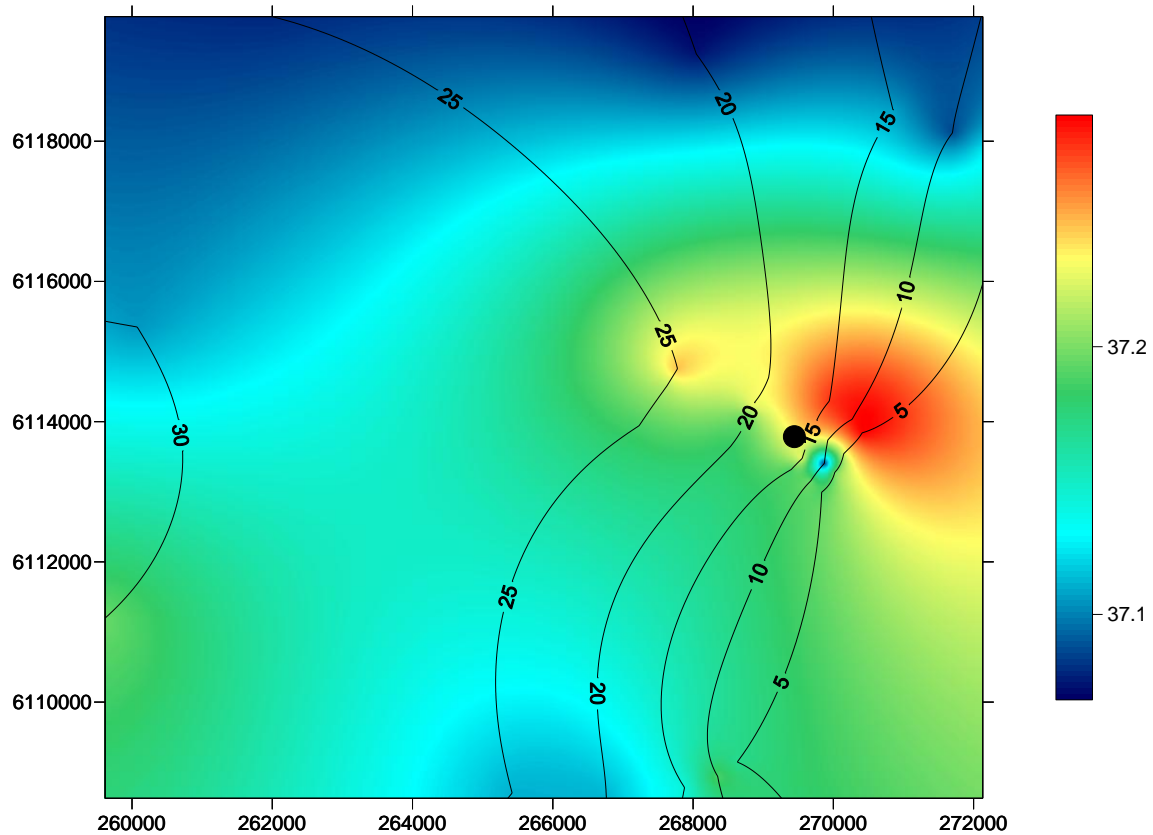


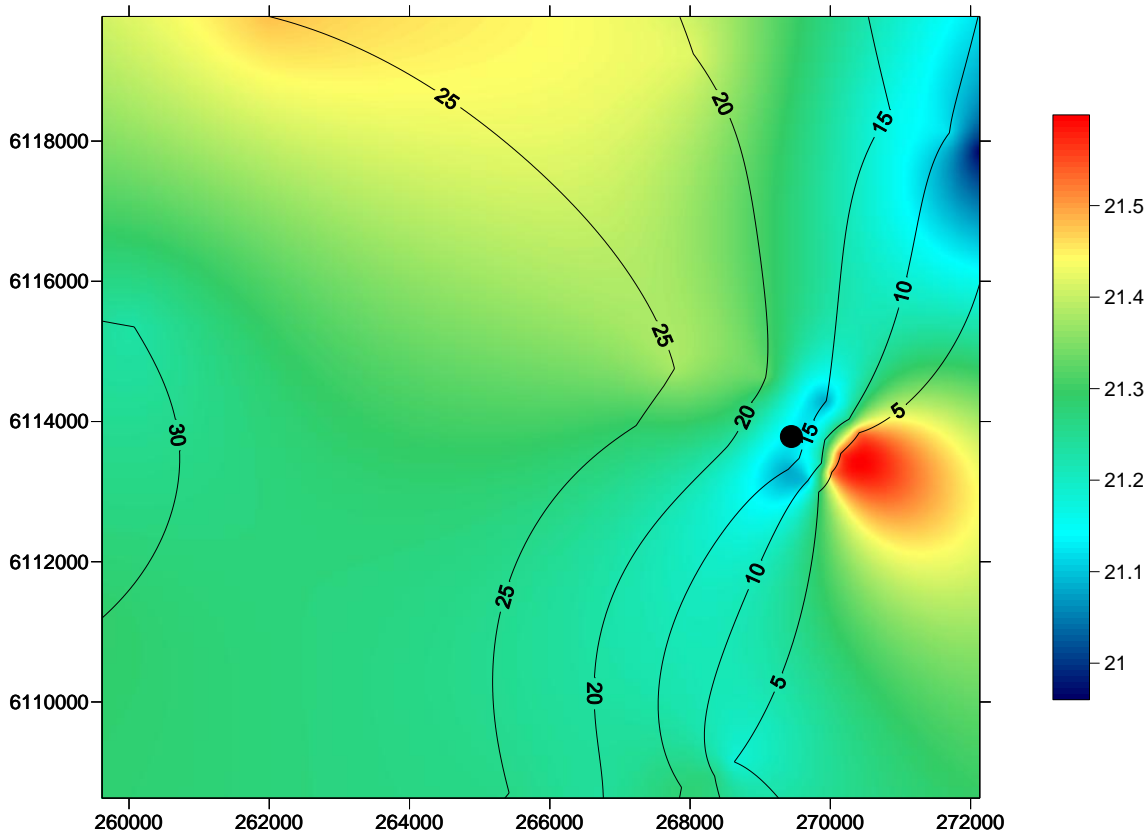
# **Appendix G**

## Water Quality Data Summary

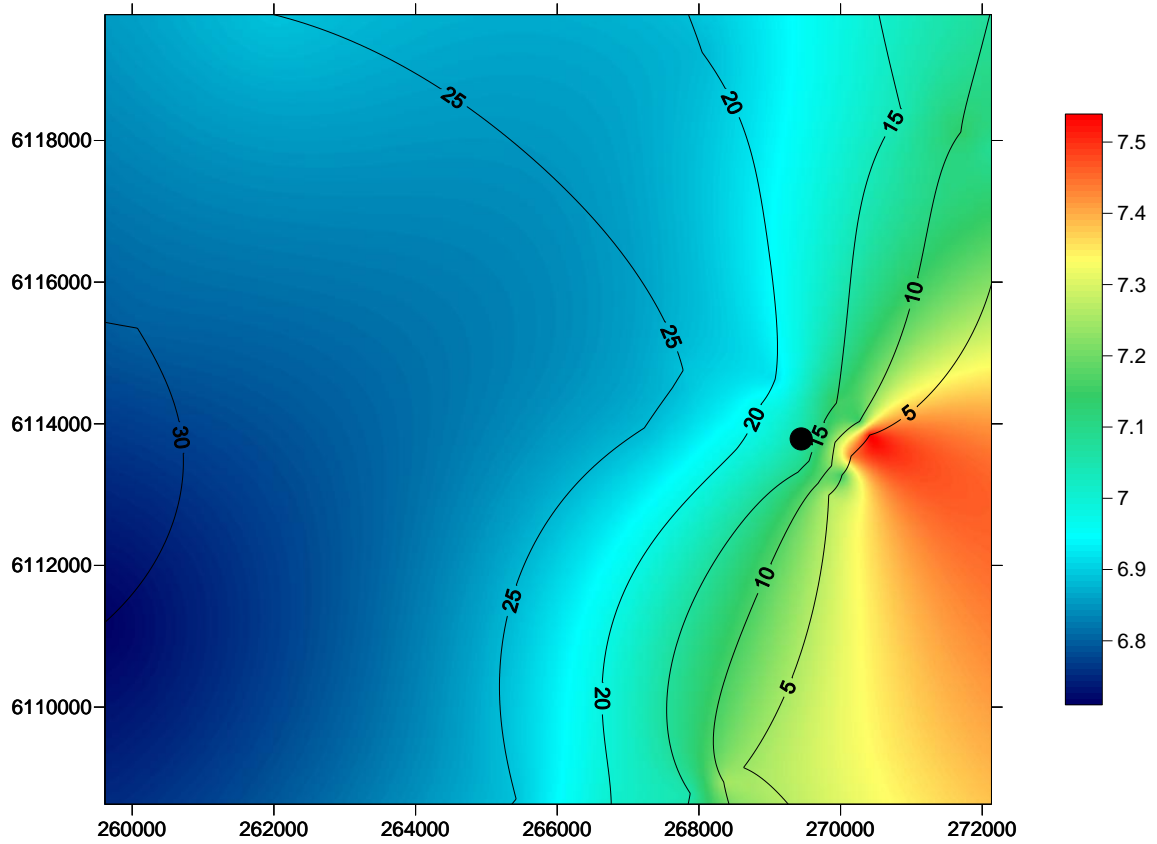
24<sup>th</sup> March, 2010



**Figure 1** Spatial change in TDS (g/L) concentration, on the seafloor, in the Port Stanvac region. The coloured scale bar represents changes in TDS concentration between 37.0 g/L and 37.3 g/L. Contour lines denote a five metre change in depth. X coordinates refer to eastings and Y coordinates refer to northings measured in metres. Black dot represents position of ADP outfall. Water quality survey undertaken on the 24th March, 2010.



**Figure 2** Spatial change in water temperature, on the seafloor, in the Port Stanvac region. The coloured scale bar represents temperature changes between 21.0 °C and 21.6 °C. Contour lines denote a five metre change in depth. X coordinates refer to eastings and Y coordinates refer to northings measured in metres. Black dot represents position of ADP outfall. Water quality survey undertaken on the 24th March, 2010.



**Figure 3** Spatial change in dissolved oxygen concentration, on the seafloor, in the Port Stanvac region. The coloured scale bar represents a change in the dissolved oxygen concentration between 6.7 mg/L and 7.5 mg/L. Contour lines denote a five metre change in depth. X coordinates refer to eastings and Y coordinates refer to northings measured in metres. Black dot represents position of ADP outfall. Water quality survey undertaken on the 24th March, 2010.

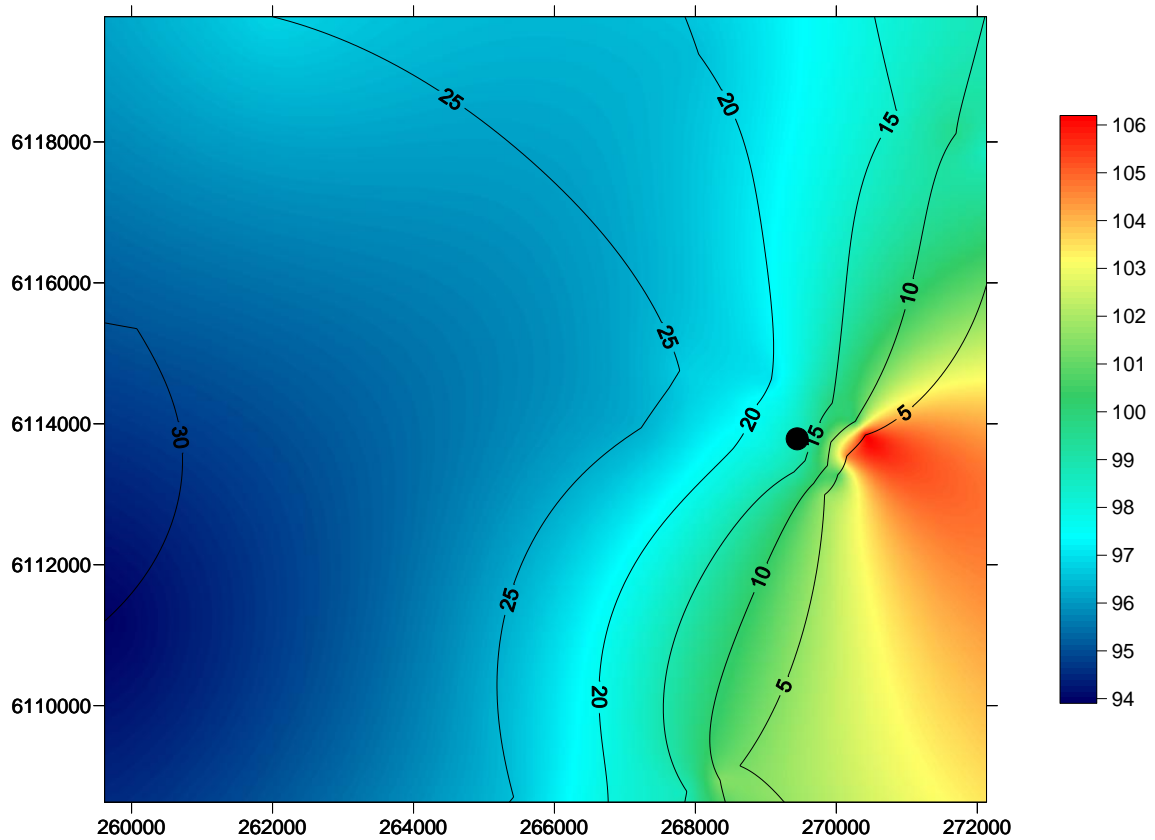


Figure 4 Spatial change in dissolved oxygen concentration (expressed as percentage saturation), on the seafloor, in the Port Stanvac region. The coloured scale bar represents a change in the dissolved oxygen concentration between 94 % and 106 %. Contour lines denote a five metre change in depth. X coordinates refer to eastings and Y coordinates refer to northings measured in metres. Black dot represents position of ADP outfall. Water quality survey undertaken on the 24th March, 2010.

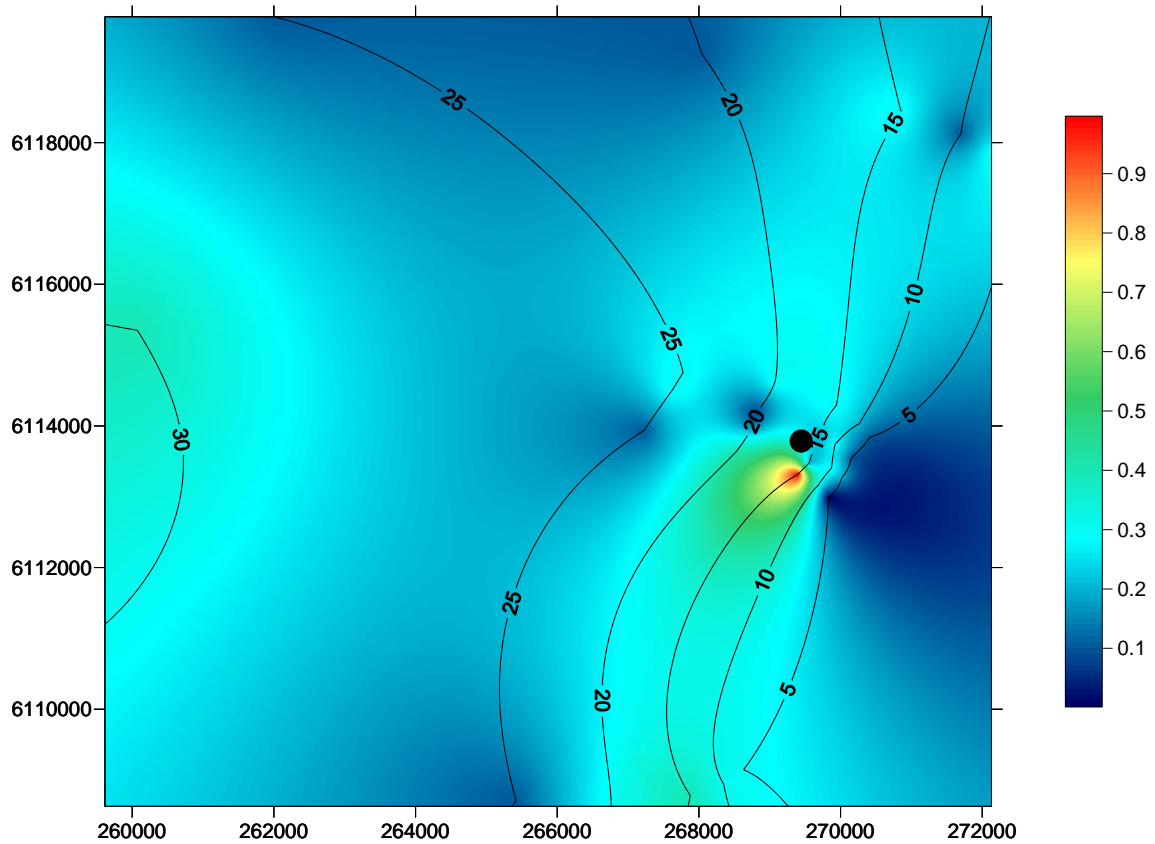
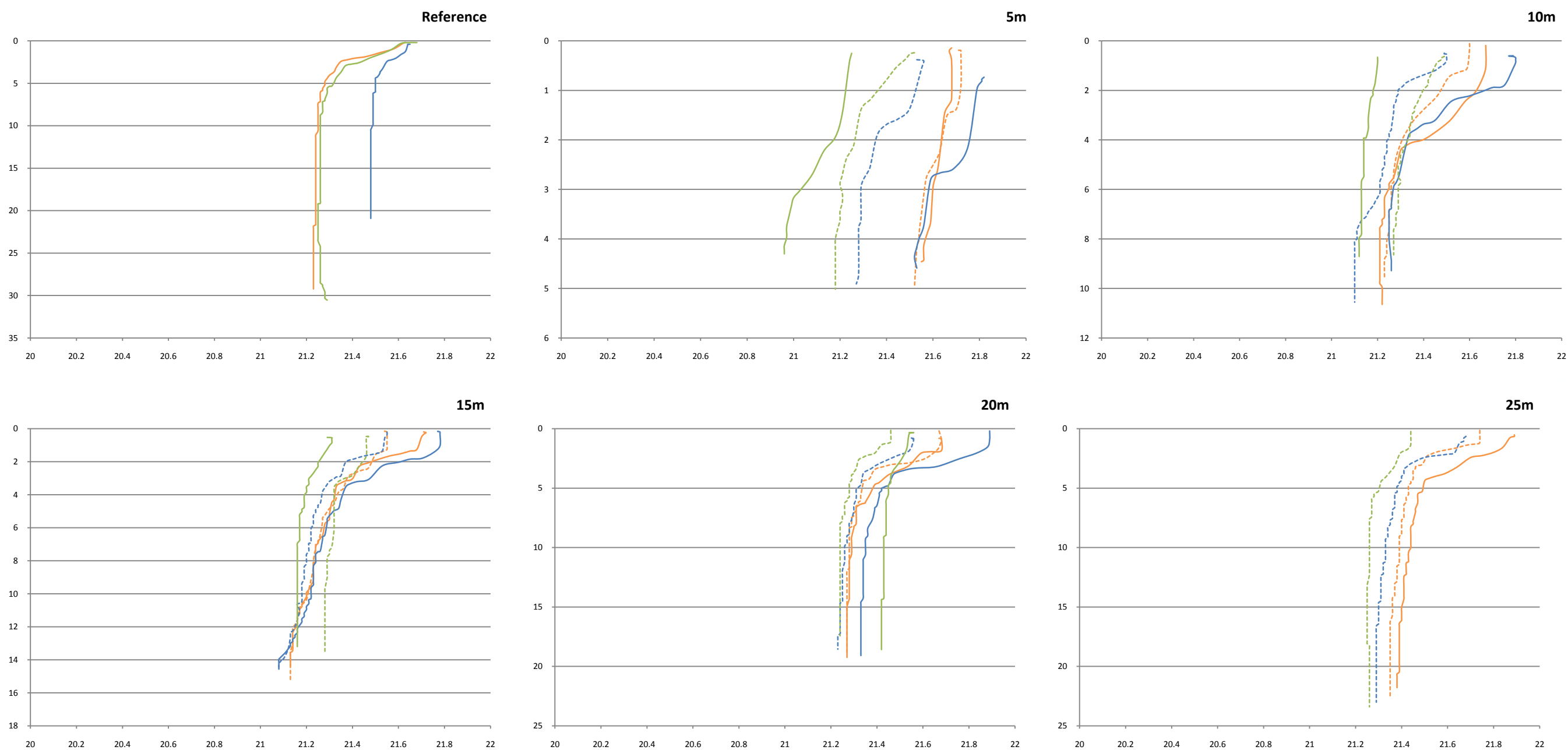
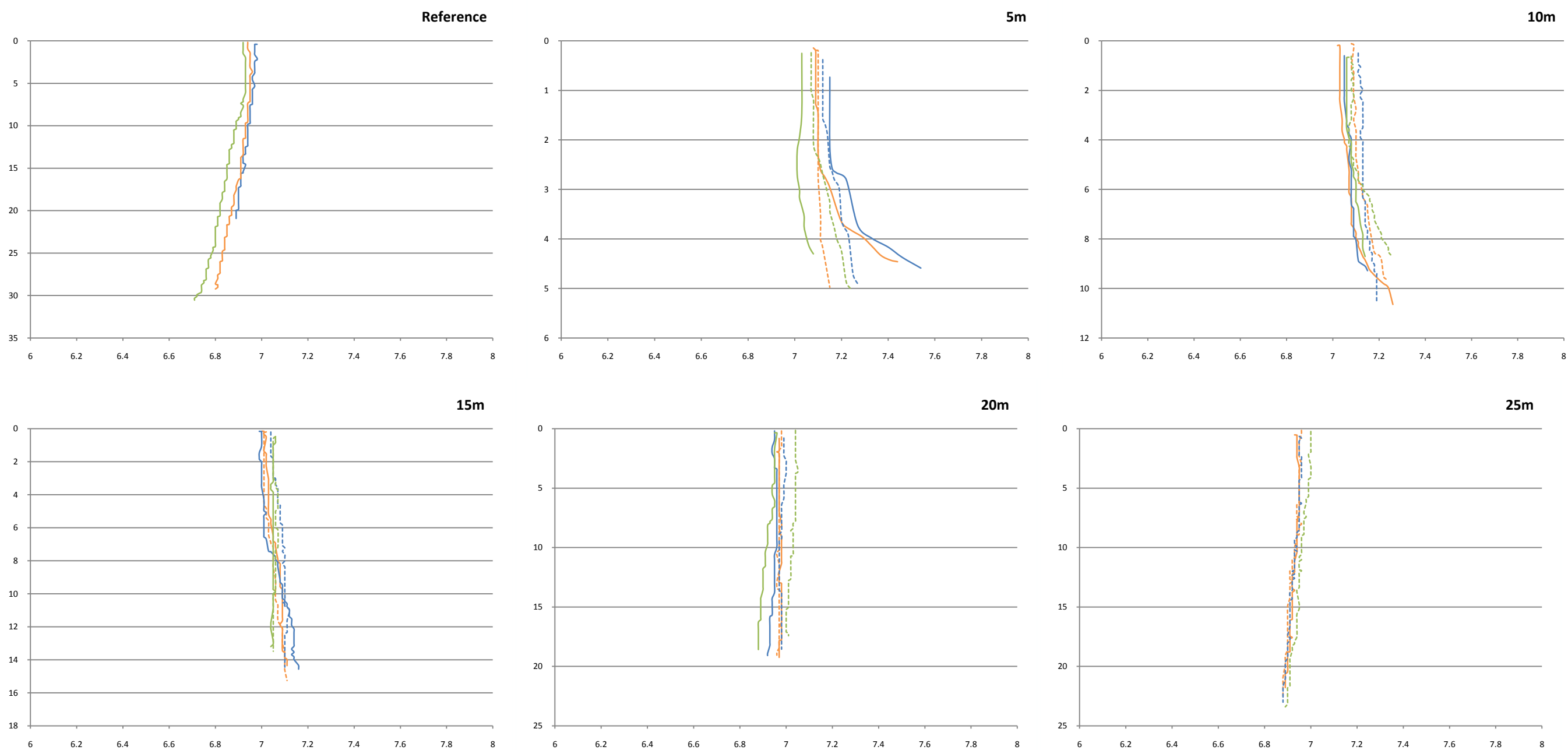


Figure 5 Spatial change in chlorophyll a concentration, one metre below the surface, in the Port Stanvac region. The coloured scale bar represents a change in chlorophyll concentration between 0.1  $\mu\text{g/L}$  and 1.0  $\mu\text{g/L}$ . Contour lines denote a five metre change in depth. X coordinates refer to eastings and Y coordinates refer to northings measured in metres. Black dot represents position of ADP outfall. Water quality survey undertaken on the 24th March, 2010.

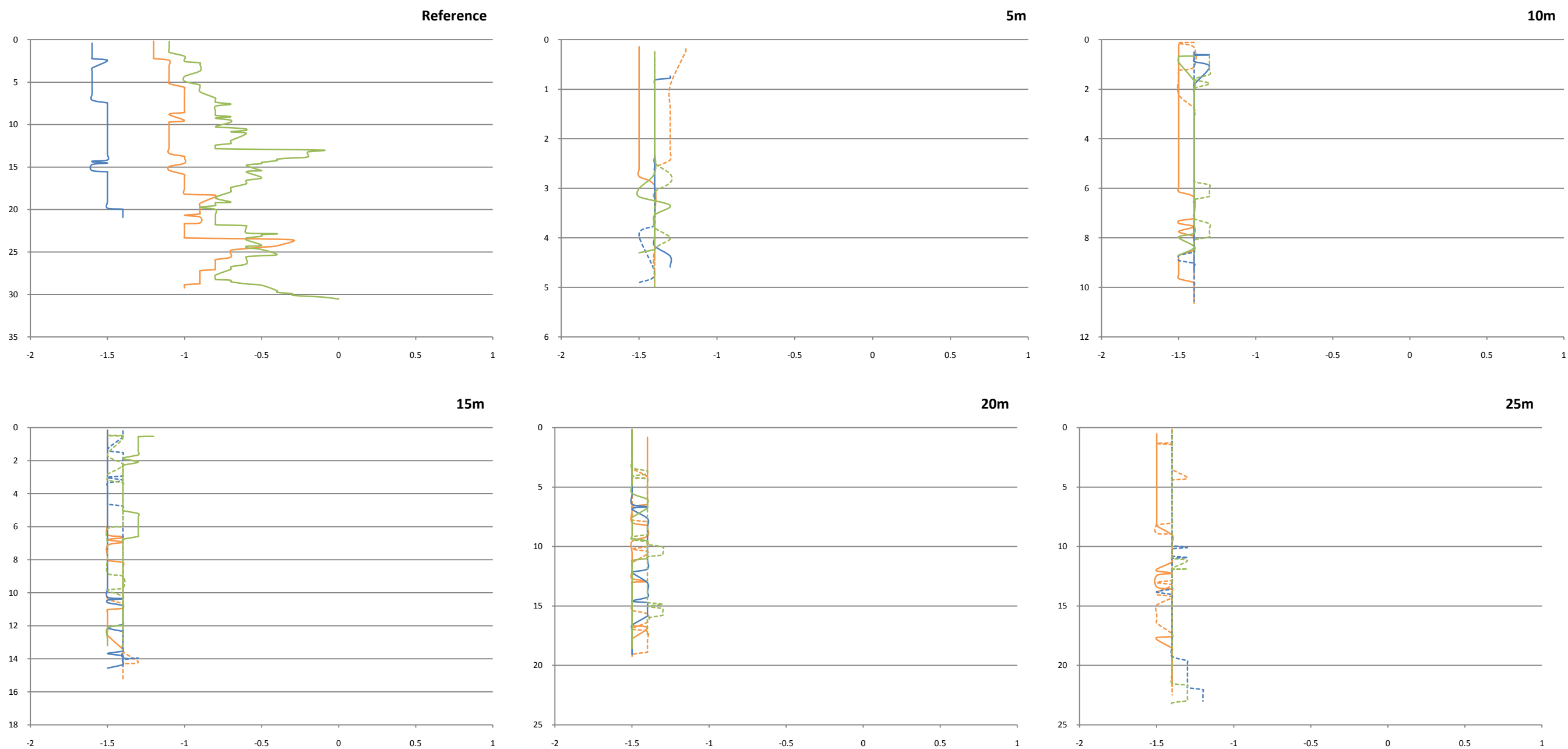


**Figure 6** Change in water temperature (x axis; degrees Celsius) at different depths (y axis; metres) throughout the water column. Water quality profiles were conducted at a depth of 5 m, 10 m, 15 m, 20 m, 25 m and 10 km offshore (Reference sites); north (solid lines) and south (broken line) of the ADP diffuser. Orange represents 100 m, blue 500 m and green 5 km either north or south of the diffuser. Water quality survey undertaken on the 24th March, 2010.

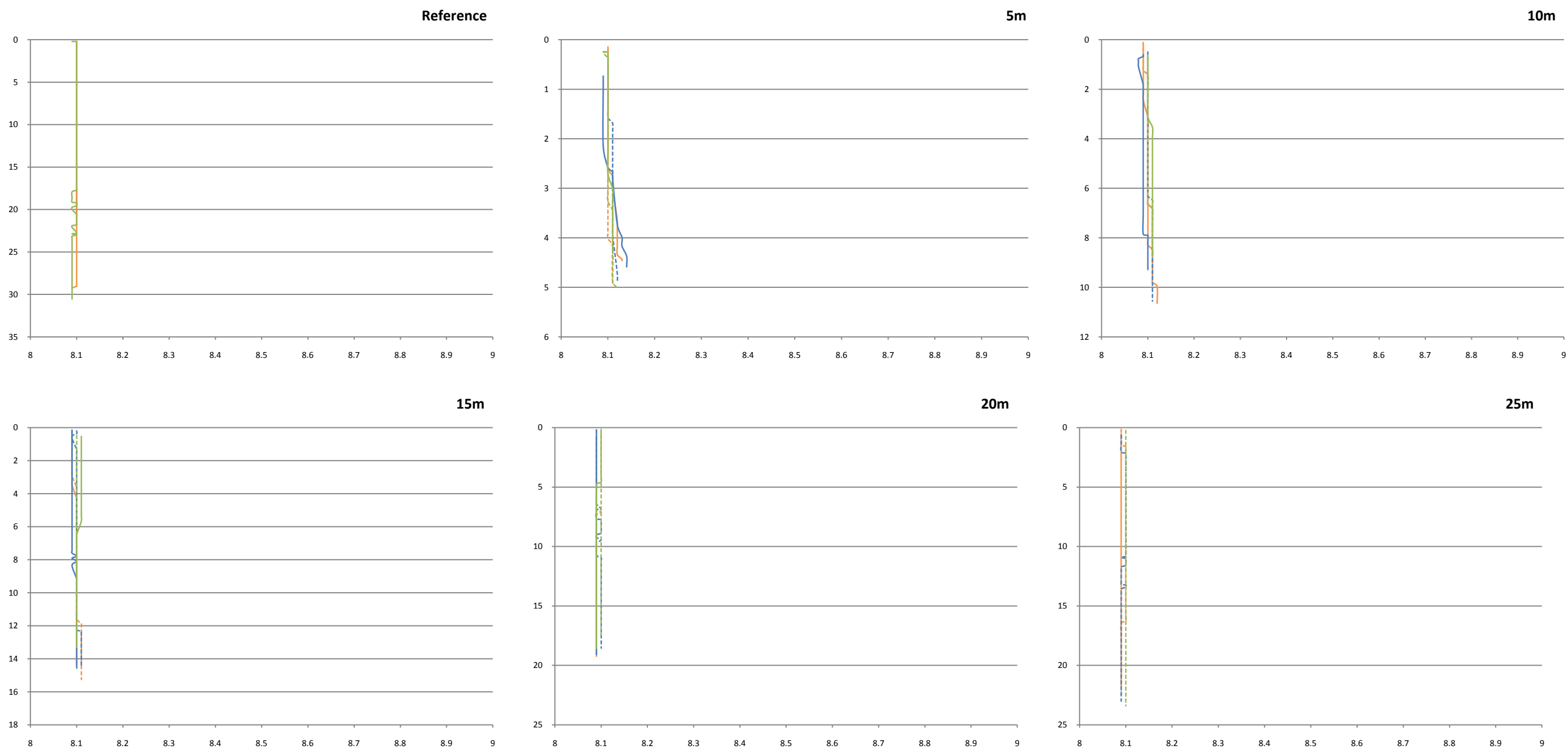


**Figure 7** Change in dissolved oxygen (x axis; mg/L) at different depths (y axis; metres) throughout the water column. Water quality profiles were conducted at a depth of 5 m, 10 m, 15m, 20 m, 25 m and 10 km offshore (Reference sites); north (solid lines) and south (broken line) of the ADP diffuser. Orange represents 100 m, blue 500 m and green 5 km either north or south of the diffuser. Water quality survey undertaken on the 24th March, 2010.

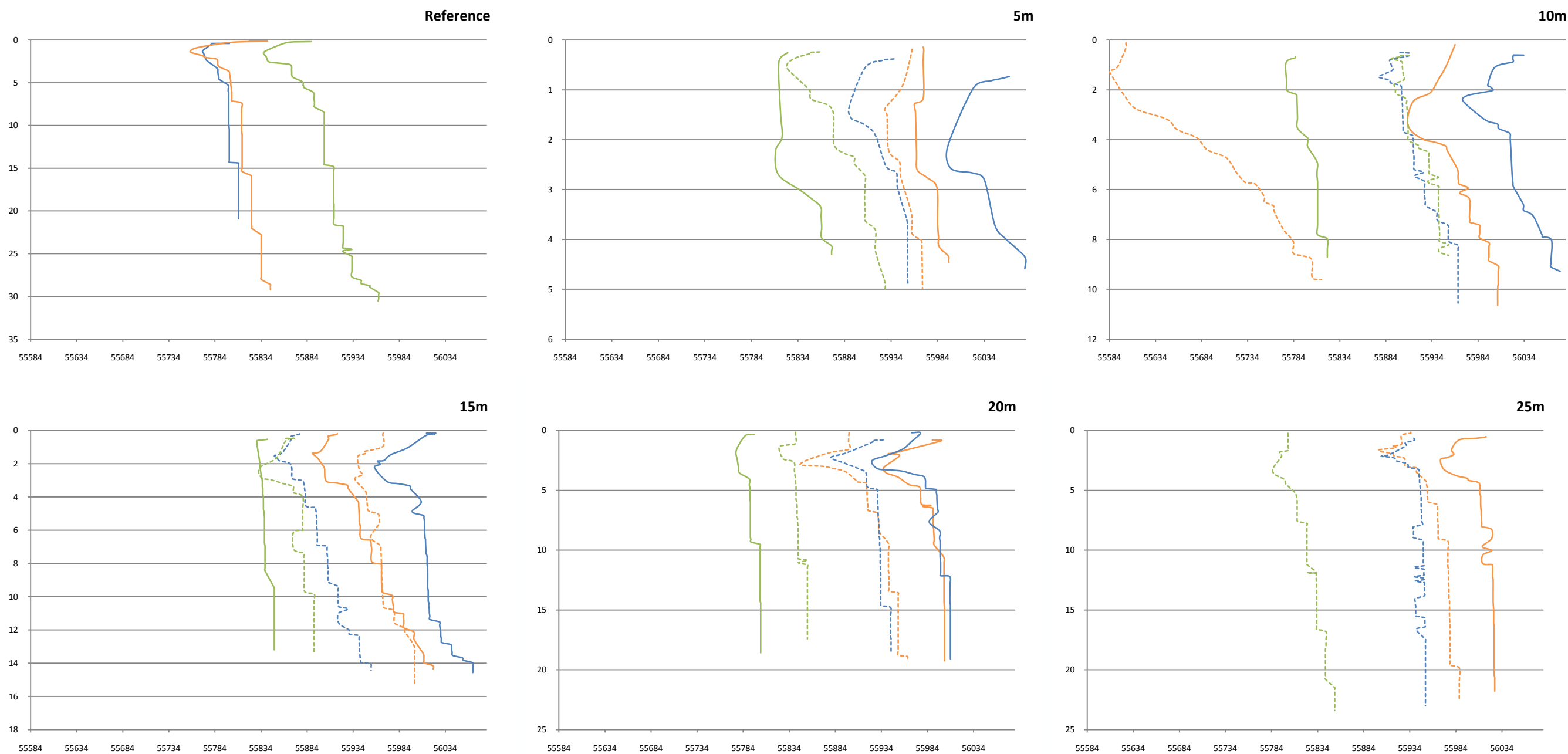




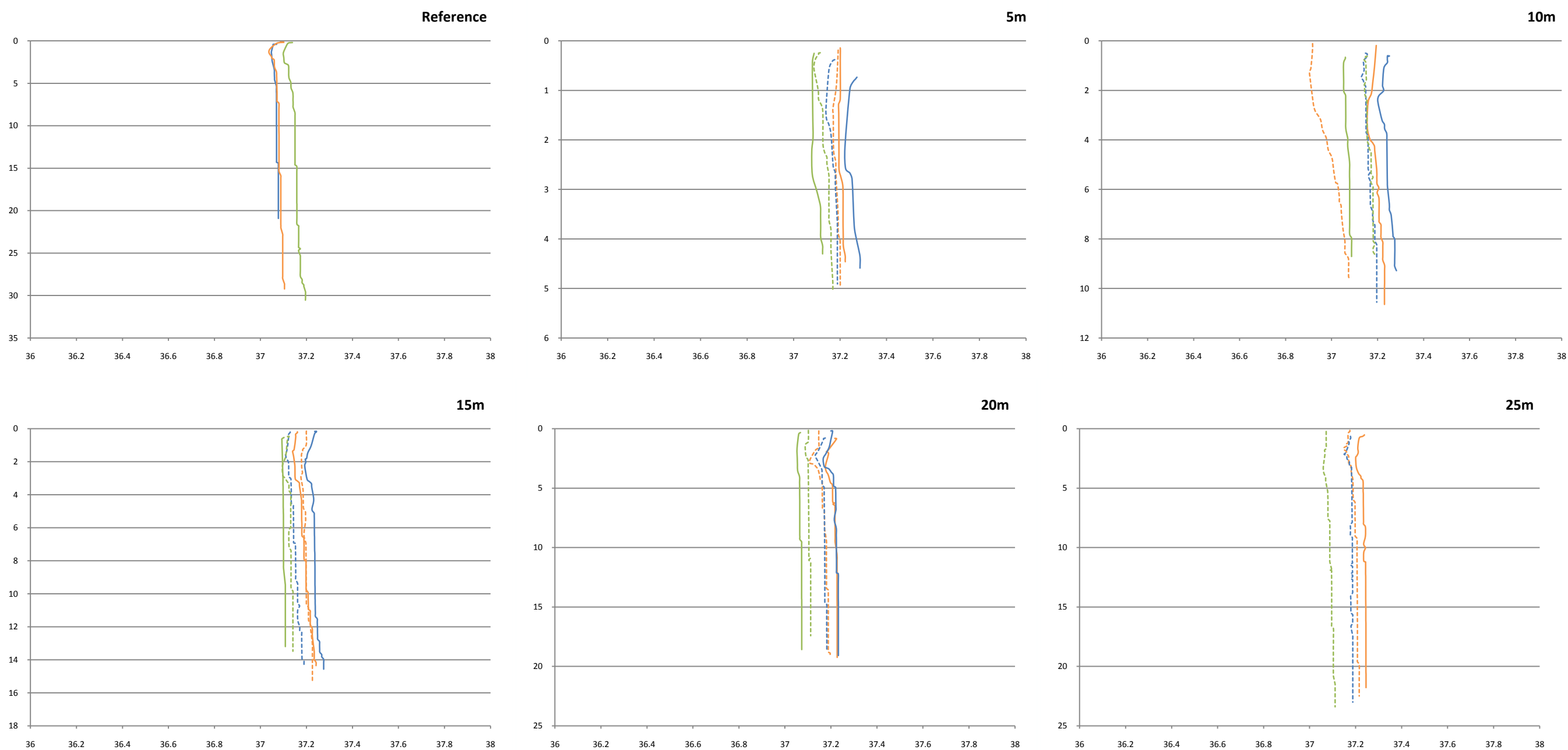
**Figure 8** Change in turbidity (x axis; NTU) at different depths (y axis; metres) throughout the water column. Water quality profiles were conducted at a depth of 5 m, 10 m, 15m, 20 m, 25 m and 10 km offshore (Reference sites); north (solid lines) and south (broken line) of the ADP diffuser. Orange represents 100 m, blue 500 m and green 5 km either north or south of the diffuser. Water quality survey undertaken on the 24th March, 2010.



**Figure 9** Change in pH (x axis; pH units) at different depths (y axis; metres) throughout the water column. Water quality profiles were conducted at a depth of 5 m, 10 m, 15m, 20 m, 25 m and 10 km offshore (Reference sites); north (solid lines) and south (broken line) of the ADP diffuser. Orange represents 100 m, blue 500 m and green 5 km either north or south of the diffuser. Water quality survey undertaken on the 24th March, 2010.



**Figure 10** Change in specific conductivity (x axis;  $\mu\text{S}/\text{cm}$ ) at different depths (y axis; metres) throughout the water column. Water quality profiles were conducted at a depth of 5 m, 10 m, 15m, 20 m, 25 m and 10 km offshore (Reference sites); north (solid lines) and south (broken line) of the ADP diffuser. Orange represents 100 m, blue 500 m and green 5 km either north or south of the diffuser. Water quality survey undertaken on the 24th March, 2010.



**Figure 11** Change in total dissolved solids (x axis; g/L) at different depths (y axis; metres) throughout the water column. Water quality profiles were conducted at a depth of 5 m, 10 m, 15m, 20 m, 25 m and 10 km offshore (Reference sites); north (solid lines) and south (broken line) of the ADP diffuser. Orange represents 100 m, blue 500 m and green 5 km either north or south of the diffuser. Water quality survey undertaken on the 24th March, 2010.