

Reporting to the NPI involves determining all the emissions from your facility over a period of one year. You then send this information to the EPA where we check your data before publishing the emissions on the NPI website.

### Estimating emissions for the NPI

Estimating emissions can be difficult but manuals and estimation tools are available to assist you. The manuals cover a wide range of processes including mining, manufacturing and intensive livestock production. You can find these on the NPI website.

### Submitting a report

You can submit your NPI report electronically or in hard copy.

To report electronically you should complete the registration form available on the NPI website. Training on how to use the online reporting system is offered by the EPA every year. Please contact the South Australian NPI Team (details on the back of this brochure) for information on training sessions.

Alternatively, you can download reporting forms from the NPI website. Once completed, you can either post, fax or email your report to the South Australian NPI Team.

You are required to submit your NPI reports to the EPA on an annual basis. You have the option to report on either a calendar or financial year. Calendar year reports are due by 31 March every year while financial year reports are due by 30 September every year.

### How NPI data can affect EPA licence fees

On 1 July 2008, the EPA introduced a new 'user pays and polluter pays' licence fee system. Each licence fee has three components:

- minimum flat administration fee
- an environmental management component
- a resource efficiency component.

The resource efficiency component is based on the data submitted to the NPI. Each year you will be asked if this is suitable or if you prefer to supply approved alternative emissions data to the EPA.

### How to find us

For assistance or more information on the NPI please contact:

The South Australian NPI Team  
Environment Protection Authority  
GPO Box 2607  
ADELAIDE SA 5001

Phone: (08) 8204 9095  
Fax: (08) 8124 4676  
Email: [npi@epa.sa.gov.au](mailto:npi@epa.sa.gov.au)  
Web: [www.epa.sa.gov.au/npi](http://www.epa.sa.gov.au/npi) (South Australia)  
[www.npi.gov.au](http://www.npi.gov.au) (Commonwealth)

## National Pollutant Inventory Reporting requirements



# NPI thresholds

The National Pollutant Inventory (NPI) is an internet database which displays information on 93 substances emitted by industrial facilities and commercial, transport and household activities Australia-wide.

In South Australia, the NPI is managed by the Environment Protection Authority (EPA). There is legislation (the NPI Environment Protection Policy) which covers the NPI.

You need to report to the NPI if your facility exceeds any of the NPI thresholds for use of listed chemical substances, burning fuel or waste, electricity consumption and total nitrogen and phosphorus to water.

The full list of NPI substances is available on the NPI website.

Use the *NPI Guide* to determine if emissions from your facility should be reported to the NPI. The *NPI Guide* is available on the NPI website at [www.npi.gov.au](http://www.npi.gov.au)

Contact the NPI Team at the EPA to register your site.



## Using listed chemical substances

This includes the handling, manufacture, import, processing, coincidental production or other use of a listed substance. Most of the listed substances have a reporting threshold of 10 tonnes per year. However variations include:

- 5 kg per year of mercury and compounds, and/or
- 25 tonnes per year of total volatile organic compounds (TVOCs).



## Burning fuel or waste

The NPI reporting thresholds for burning fuel or waste are:

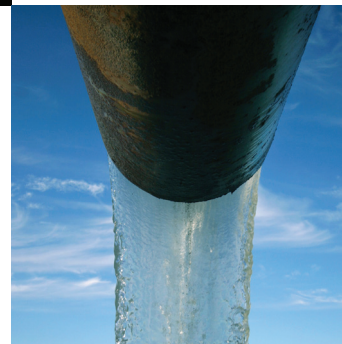
- 400 tonnes or more of fuel and/or waste burnt in the reporting year, or
- 1 tonne or more of fuel and/or waste burnt in one hour at any time during the reporting year.



## Electricity consumption

Electricity consumption must be reported where:

- actual consumption exceeds 60,000 megawatt hours per year, and/or
- the maximum potential electricity consumption is 20 megawatts or more.



## Discharging nitrogen and phosphorus to water

The actual amount of total nitrogen and total phosphorus emitted or transferred to water (excluding groundwater):

- 15 tonnes per year or more of total nitrogen to water, and/or
- 3 tonnes per year or more of total phosphorus to water.