

South Australia's Environment Protection Authority

Port Augusta High Volume Air Samplers Monitoring Network



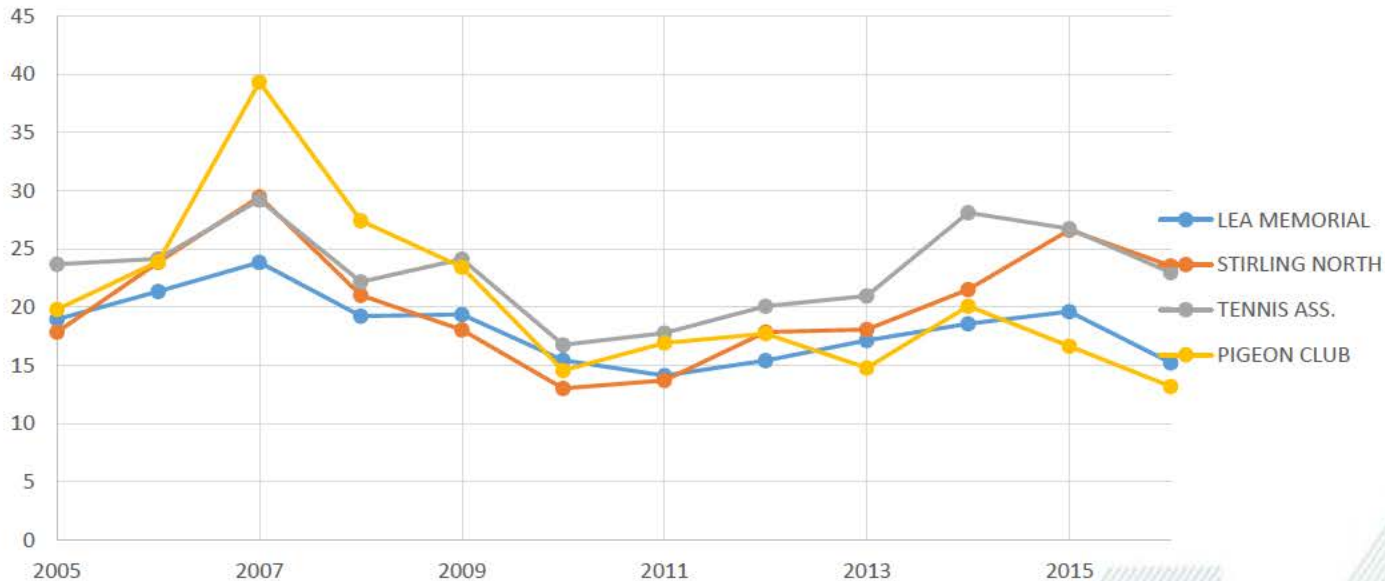
Data Analysis/Trends by the Environment Protection Authority

Monitoring Period: 2005 to mid- 2016*

* Power Station was operational during this period

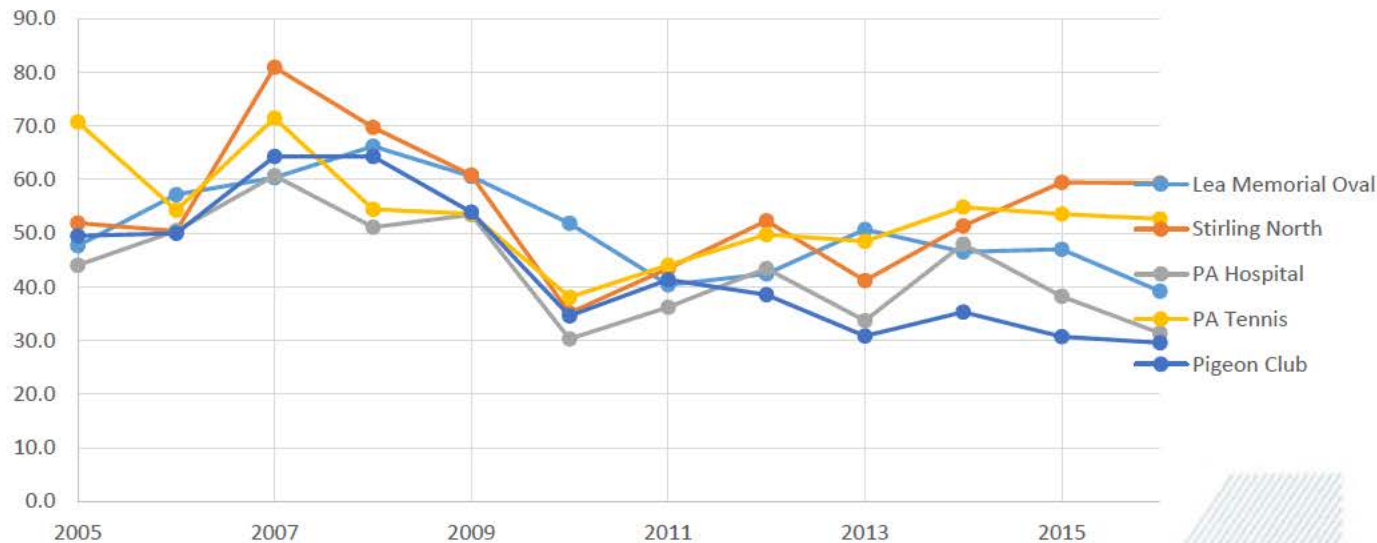


PM₁₀ – Annual Average



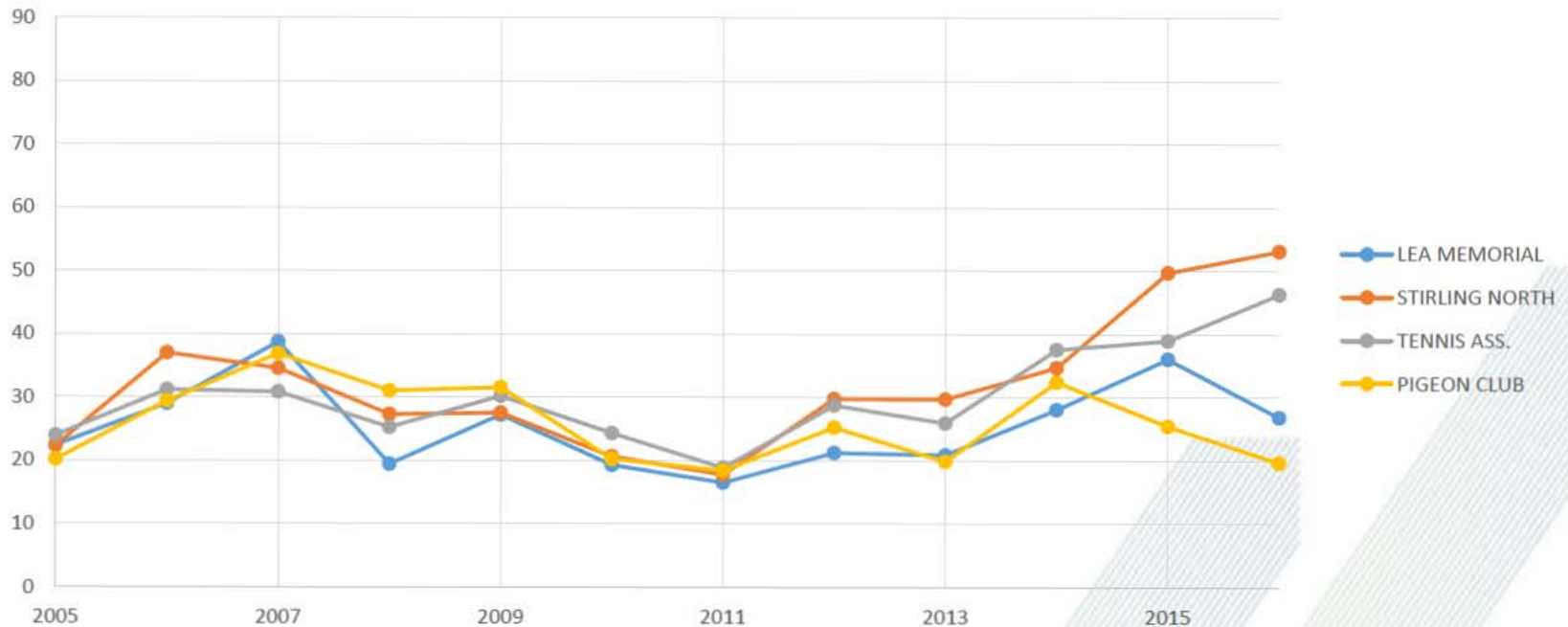
- On average the periods 2006 to 2009 were higher than 2010 to 2013.
- Lea Memorial and the Tennis Association track each other well. Lea Memorial's average never goes above the Tennis Association.
- Averages have been trending downwards since 2014.

Total Suspended Particulate (TSP) – Annual Average



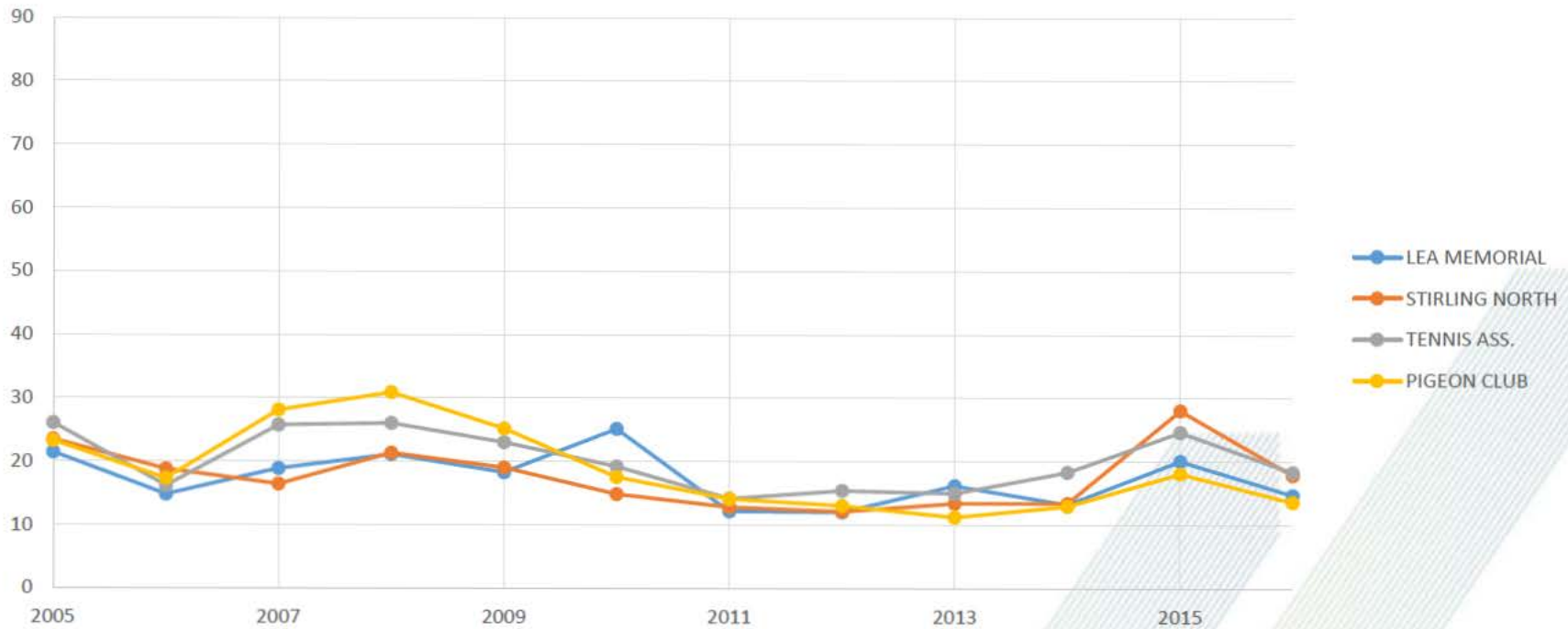
- Average was trending downwards from 2007 down to all locations being collectively at their lowest in 2010.
- However unlike PM₁₀, there is no particular pattern identified
- Highest averages in 2007; largely due to drought conditions in South Australia

PM₁₀ – Summer Averages

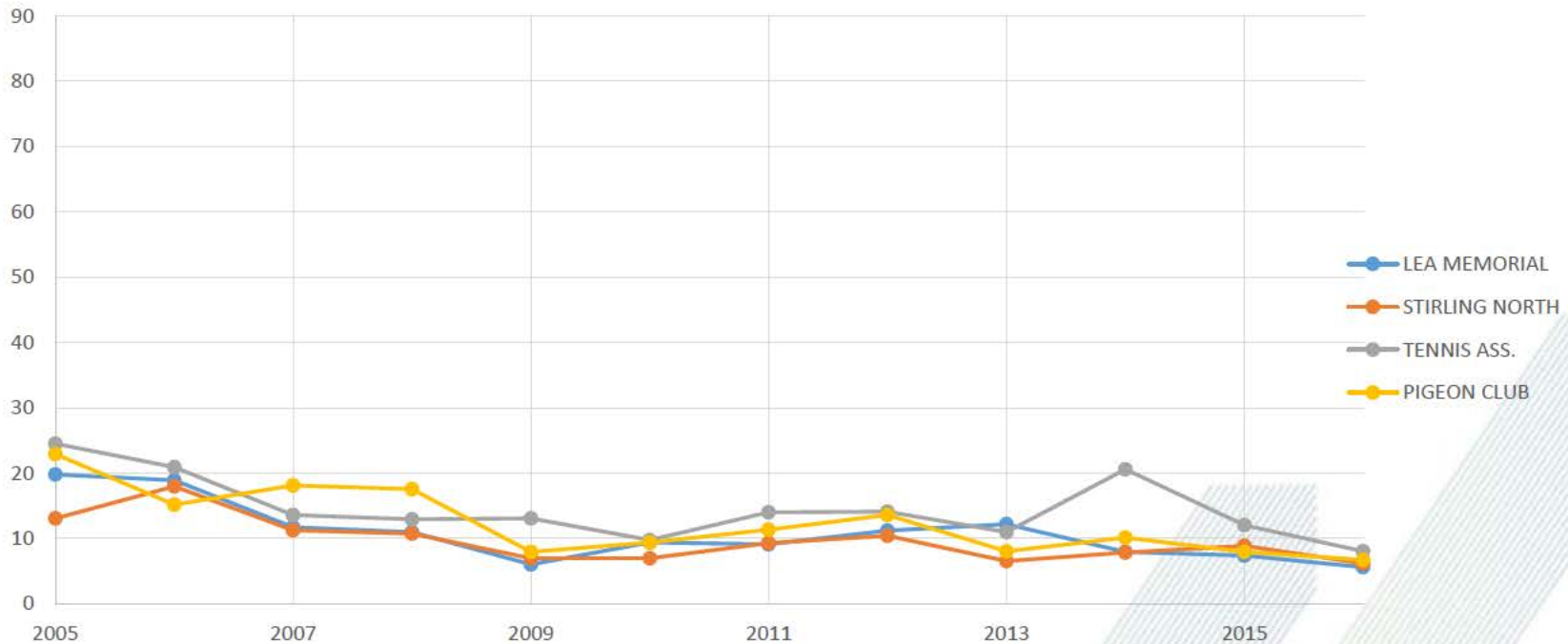


- 2015/16 summer, PM₁₀ concentrations in Stirling North and the Tennis Association are higher.

PM₁₀ – Autumn Averages

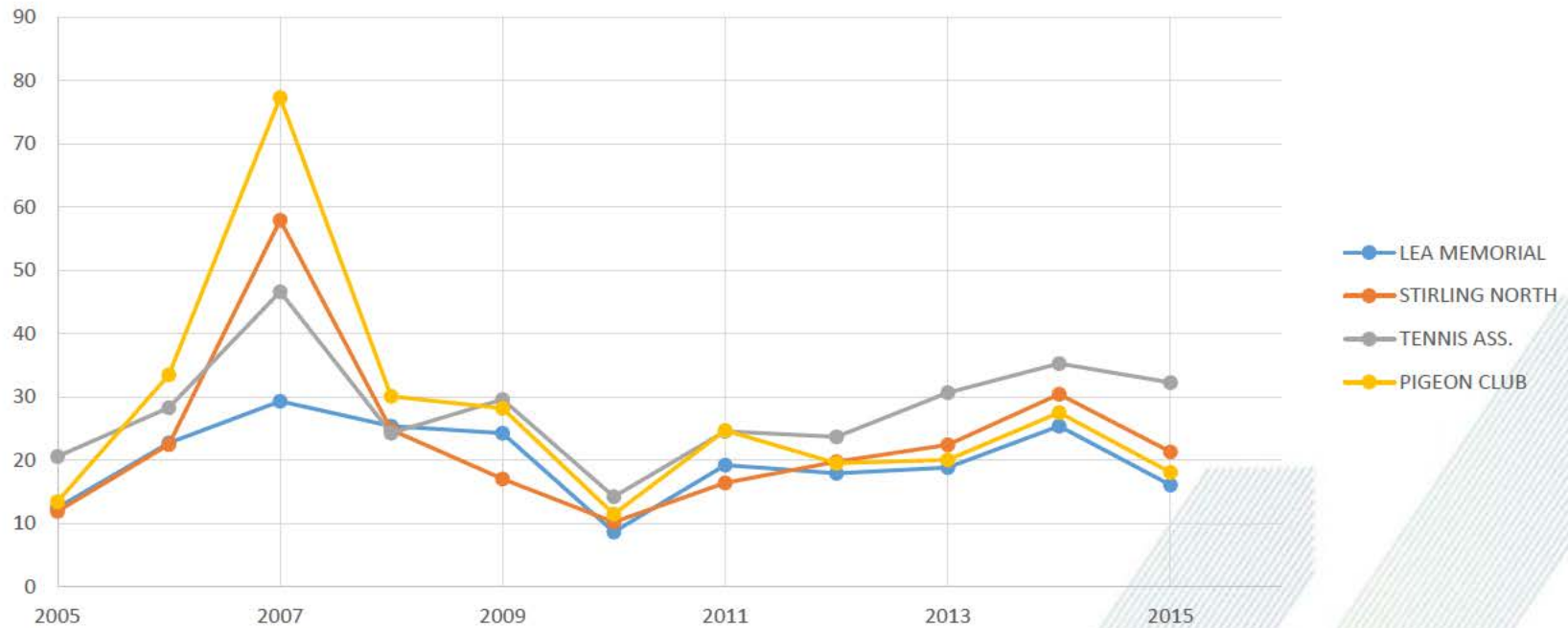


PM₁₀ – Winter Averages



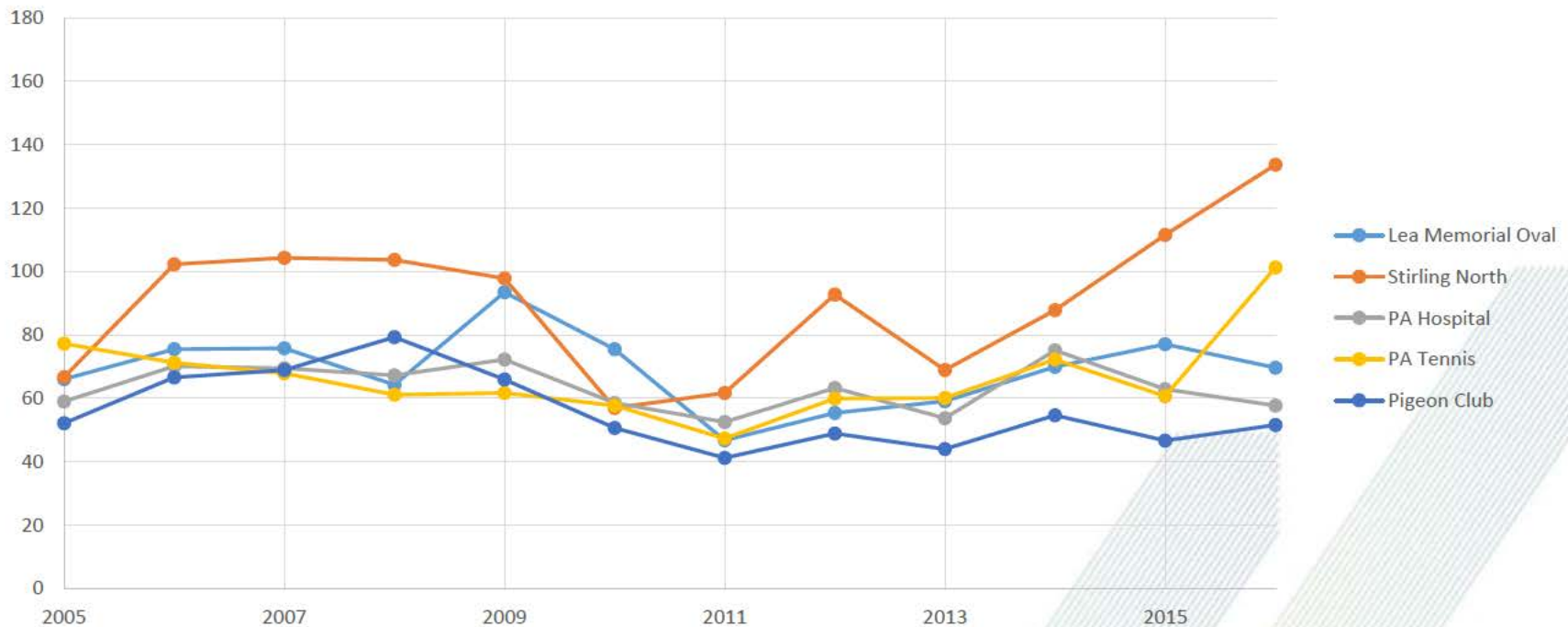
- Winter in particular has the lowest average concentration each year.

PM₁₀ – Spring Averages



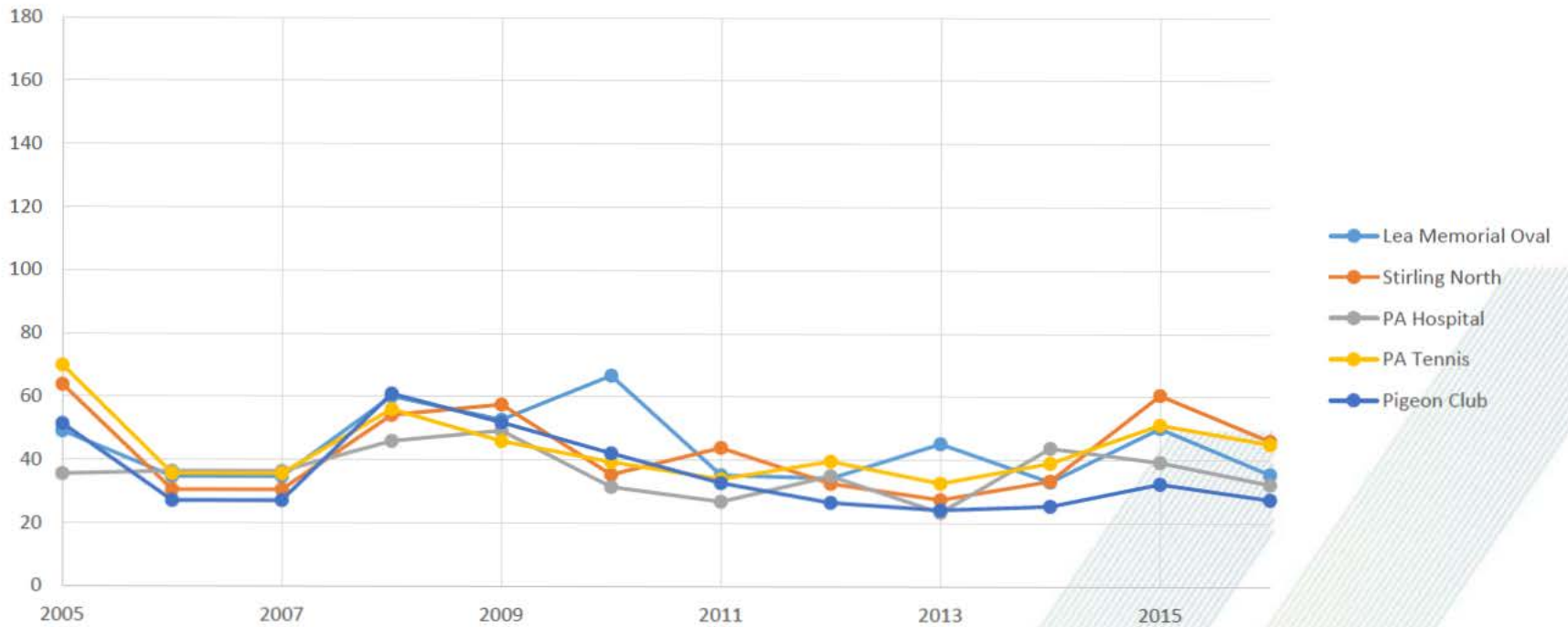
On average, summer and spring have higher concentrations than autumn and winter; In 2007, spring's concentrations were very high in all locations.

TSP - Summer Averages

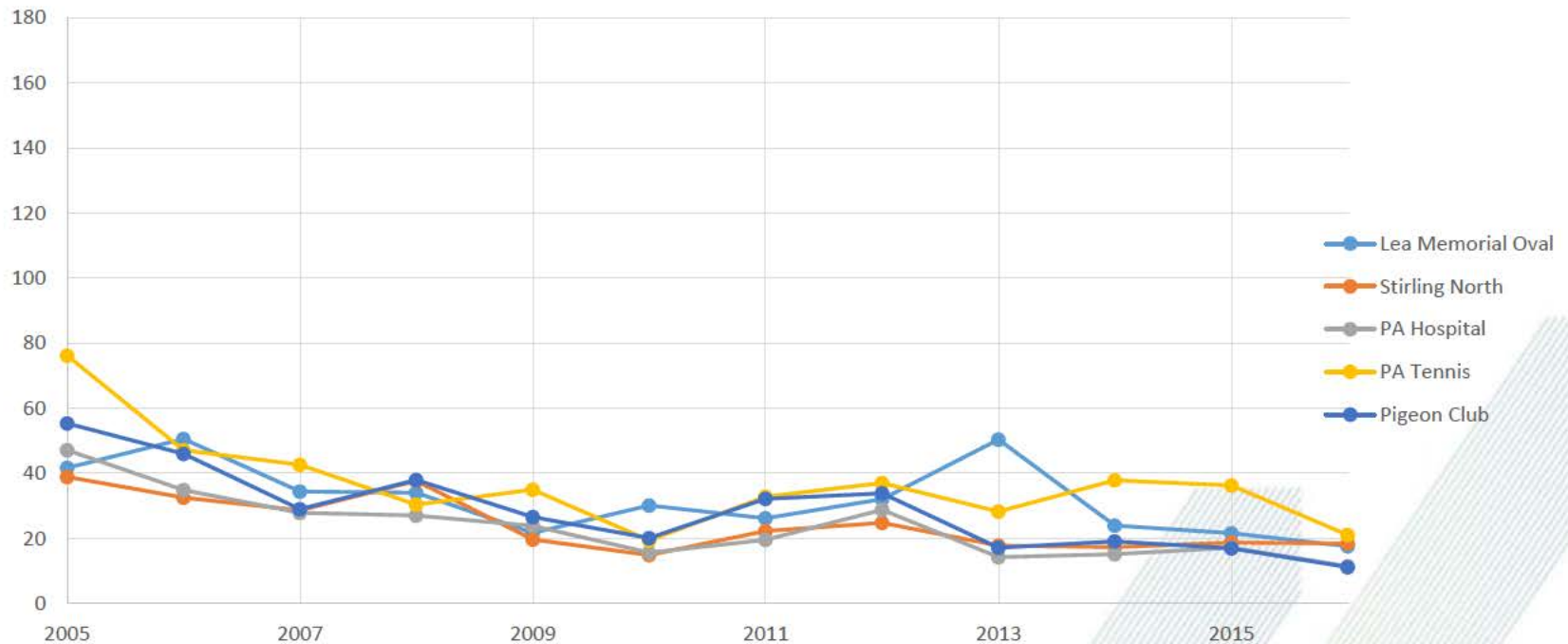


- 2015/16 summer, Total Suspended Particulate (TSP) concentrations are higher in Stirling North and the Tennis Association.

TSP – Autumn Averages

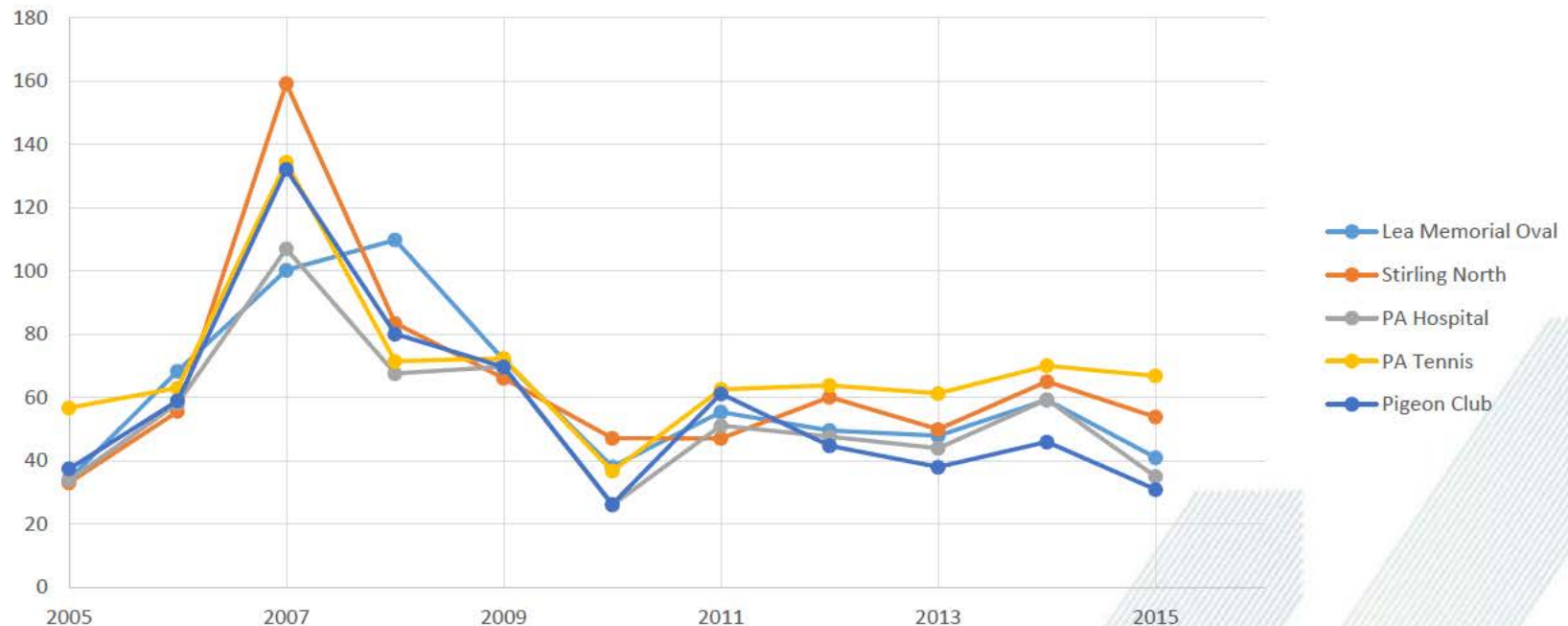


TSP – Winter Averages



Winter has the lowest average concentrations each year.

TSP – Spring Averages



- On average, summer and spring have higher concentrations than autumn and winter. In 2007, spring's concentrations were very high in all locations.