



ANNUAL OCCUPATIONAL RADIATION MONITORING REPORT

BEVERLEY AND BEVERLEY NORTH MINES

Occupational Monitoring Program

Annual Report - 2015

TABLE OF CONTENTS

1	EXECUTIVE SUMMARY.....	4
1.1	Introduction.....	4
1.2	Occupational Radiation Monitoring.....	4
1.3	Occupational Dose Estimation.....	4
1.4	Adequacy and Effectiveness of Equipment and Procedures.....	4
2	INTRODUCTION.....	5
2.1	HGR Management Personnel.....	6
2.2	Summary of Process Activities and Changes.....	6
3	OCCUPATIONAL RADIATION MONITORING.....	8
3.1	Radon Decay Products.....	8
3.2	Long Lived Alpha Activity.....	10
3.3	External Gamma Dose Rate.....	13
3.3.1	Area Gamma Dose Rate Surveys.....	13
3.3.2	Thermoluminescent Dosimeter Results.....	14
3.4	Alpha Surface Contamination.....	15
4	OCCUPATIONAL DOSE ESTIMATION.....	16
5	Dose Assessment.....	16
6	ADEQUACY AND EFFECTIVENESS OF EQUIPMENT AND PROCEDURES.....	18
7	CONCLUSIONS.....	19
8	REFERENCES.....	19

Figures

Figure 2-1: Map showing the location of wellfields operated during 2013.....	7
Figure 3-1: Radon Decay Products Monitoring Trends.....	9
Figure 3-2: LLAA Concentration in Dust Monitoring Trends - Supervised and Office Areas.....	11
Figure 3-3: LLAA Concentration in Dust Monitoring Trends - Controlled Areas.....	11
Figure 3-4: LLAA Concentration in Dust Monitoring Trends - Personal Monitoring.....	12
Figure 3-5: Gamma Dose Rate Monitoring Trend.....	13
Figure 3-6: TLD Badge Dose Trends.....	14
Figure 3-7: Alpha Surface Contamination Trends.....	15
Figure 5-1: Total Effective Dose Trends.....	16
Figure 5-2: Average Total Effective Dose to each Workgroup from each Pathway.....	17

Tables

Table 3-1: Radon Decay Product PAEC in the Plant and Wellfield.....	8
Table 3-2: Radon Decay Product PAEC outside the Control Room.....	9
Table 3-3: LLAA Concentrations from Dust at the Plant and Wellfield.....	10
Table 3-4: LLAA Concentrations from Dust in the Controlled Area.....	10

Document Number	Date Issued	Authorised by	Page No.
Bev-Report.213	16 February 2016	S. Kuty	2 of 22

Table 3-5: LLAA Concentrations from Personal Monitoring of Work 10

Table 3-6: Gamma Dose Rate Survey Results for the Plant and Wellfield 13

Table 3-7: TLD Badge Dose by Work Group 14

Table 3-8: Alpha Surface Contamination Survey Results for Plant and Wellfield..... 15

Table 5-1: Total Effective Dose Statistics..... 16

Table 5-2: Average and Maximum Effective Dose for Exposure Pathways by Work Group 17

Document Number	Date Issued	Authorised by	Page No.
Bev-Report.213	16 February 2016	S. Kuty	3 of 22

1 EXECUTIVE SUMMARY

1.1 Introduction

This report has been prepared in accordance with the requirements of the Heathgate Resources Pty Ltd (Heathgate) Beverley and Beverley North Uranium Mines Radiation Management Plans.

1.2 Occupational Radiation Monitoring

Radon decay products monitoring carried out in the plants and wellfields showed that the concentrations remained low during the year.

Area monitoring conducted at the plant supervised, wellfield and office areas showed that Long Lived Alpha Activity in dust remained consistently low.

Gamma dose rates throughout the plant and wellfield remained consistent with previous years' monitoring results.

Alpha surface contamination in the plant and wellfield areas remained consistent with previous years' monitoring results. Regular pressure cleaning helps minimise surface contamination levels in these areas.

1.3 Occupational Dose Estimation

Doses to employees and contractors at the Beverley Uranium Mine remained low during the year.

The average dose of 0.39 mSv was less than the annual effective dose limit of 1 mSv to members of the public as stipulated in the South Australian Radiation Protection and Control (Ionising Radiation) Regulations 2000. The maximum dose for the year was 2.68 mSv, also well below the employee dose limits of 20 mSv/yr averaged over 5 years or 50 mSv/yr in any one year.

There were a total of 268 employees and contractors at the Beverley and Beverley North Mines during 2015.

1.4 Adequacy and Effectiveness of Equipment and Procedures

The policies and procedures implemented and equipment installed to manage radiation doses require constant review to ensure that doses to employees remain as low as reasonably achievable (ALARA). Some specific examples for the year ending 31 December 2015 are as follows:

- Acquired new radiation monitoring equipment and respiratory protection devices
- Preventive maintenance of Drier system and Ion Exchange Columns were carried out
- Conducted external and internal Radiation Safety Training to impart radiation safety knowledge to personnel

Document Number	Date Issued	Authorised by	Page No.
Bev-Report.213	16 February 2016	S. Kuttly	4 of 22

2 INTRODUCTION

This report is prepared in accordance with the requirements of the Beverley and Beverley North Uranium Mines Radiation Management Plans (RMP) and the conditions of the License to Carry out Mining or Mineral Processing (LM4) under the Radiation Protection and Control Act, 1982. It provides a summary of all monitoring conducted during the calendar year 2015, previously reported quarterly in the Beverley and Beverley North Mines Occupational Radiation Monitoring Quarterly Reports.

The RMP's document the strategies developed by Heathgate Resources for the:

- Identification of potential radiation sources
- Monitoring of radiation exposures
- Assessment of employee dose
- Management of radiation exposures to ensure compliance with the ALARA principle.

The objective of a RMP is to assist Heathgate to fulfil its statutory requirements detailed in the Code of Practice on Radiation Protection and Radioactive Waste Management in Mining and Mineral Processing (2005) and to comply with the relevant State and Commonwealth legislation.

The main radiation issues considered by the RMP and reported in this document are:

- Radon decay products inhalation
- Long lived alpha activity in dust inhalation
- Gamma dose external exposure
- Alpha contamination of surfaces
- Calculation of employee radiation dose
- Compliance with the ALARA principle.

Document Number	Date Issued	Authorised by	Page No.
Bev-Report.213	16 February 2016	S. Kuttly	5 of 22

2.1 HGR Management Personnel

Heathgate personnel, who are currently responsible for radiation management at the Beverley site, are as follows:

- President – Craig Bartels
- Operations Manager — Simon Tildesley
- Production Managers — Chris Every and Chris Heinrich
- Regulatory and Compliance Manager – Andrea Marsland-Smith
- Senior Health, Safety, Security and Environment Advisor — Sankaran Kutty.

The statutory position of Radiation Safety Officer is held by Sankaran Kutty, whose contact details are provided below:

Sankaran Kutty
Senior HSSE Advisor
Heathgate Resources
Suite 1, Level 7, 25 Grenfell St
Adelaide SA 5000

Adelaide Office: Ph: 08 8110 0500 Fax: 08 8212 5559
Beverley Site: Ph: 08 8413 2238 Fax: 08 8648 4628

2.2 Summary of Process Activities and Changes

A current map of the Beverley Site is provided in Figure 2-1. No wellfields of the Beverley or Beverley North mining areas were operated in 2015 (The processing of uranium that was carried out at Beverley and Beverley North processing plants were from Four Mile East wellfields).

A number of modifications were made to processes during the year which had an impact on occupational exposures:

- A new reagent unloading bay was installed at the Pannikan Plant. This significantly reduces the opportunity to pick up contamination by trucks
- The filtration circuit was removed from the Beverley Plant which reduced the general radiation field in that area and thus the occupational exposure
- Regular preventive maintenance was carried out in the Drier that helped to minimize LLA dust concentrations in the controlled area
- Inspections and preventive maintenance of all Ion Exchange Columns at Beverley and Pannikan plants were carried out. This resulted in better efficiency of the columns, minimised breakdowns and thus helped to reduce occupational dose from confined space entries

Document Number	Date Issued	Authorised by	Page No.
Bev-Report.213	16 February 2016	S. Kutty	6 of 22

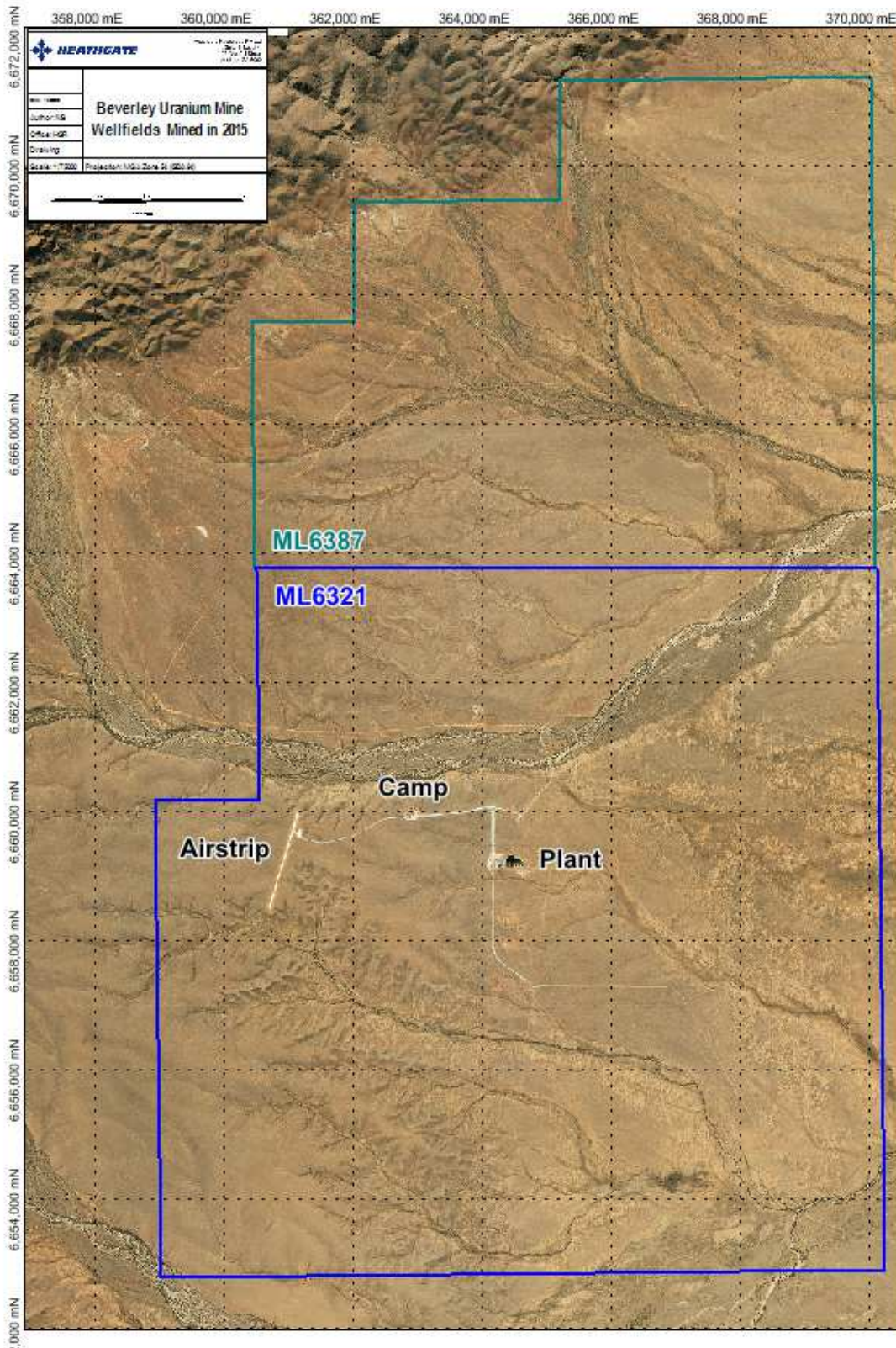


Figure 2-1: Map showing the location of Beverley and Beverley North 2015

Document Number	Date Issued	Authorised by	Page No.
Bev-Report.213	16 February 2016	S. Kuty	7 of 22

3 OCCUPATIONAL RADIATION MONITORING

The occupational radiation monitoring conducted throughout the year included the measurement of radiation levels at the Beverley Process Plant and Wellfields, Process Plant Office, Weather Tower, Camp and Beverley North Satellite Plants and Wellfields. The frequency of monitoring was conducted according to the Radiation Management Plans. This monitoring included the following:

- Radon Decay Products area monitoring
- Long Lived Alpha Activity (LLAA) in dust personal and area monitoring
- Area gamma radiation surveys
- Alpha surface contamination monitoring.

3.1 Radon Decay Products

The Potential Alpha Energy Concentration (PAEC) of radon decay products was measured throughout the plants and wellfield areas. Monitoring was conducted according to the approved Standard Operating Procedure (SOP)¹.

The average and maximum concentrations measured at various locations throughout the year are given in Table 3-1. Trends of annual averages since commencement of operations are presented in Figure 3-1.

Radon Decay Products monitoring throughout the site showed PAEC to remain consistently low. Average concentrations across the site remain well below the internal investigation level of 2 μJm^{-3} .

Table 3-1: Radon Decay Product PAEC in the Plant and Wellfield

Location	PAEC (μJm^{-3})		
	Average	Max	Number 12 Hours Samples
Drilling	0.08	0.42	4
Environmental	0.04	0.29	10
Other	0.10	0.33	4
Plant Clean	0.06	0.47	20
Plant Controlled	0.04	0.23	12
Plant Supervised	0.06	1.15	92
Wellfield	0.05	0.59	8

¹ Routine Radon Decay Products Area Monitoring Using ERDM, Standard Operating Procedure RAD 02, Heathgate, October 2014

Document Number	Date Issued	Authorised by	Page No.
Bev-Report.213	16 February 2016	S. Kuty	8 of 22

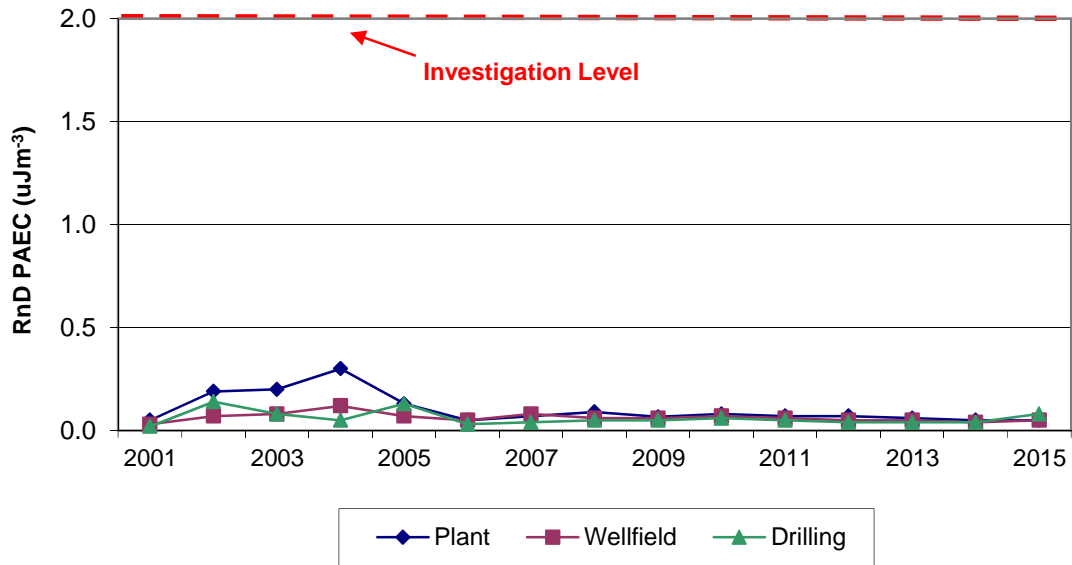


Figure 3-1: Radon Decay Products Monitoring Trends

The Potential Alpha Energy Concentration (PAEC) of radon decay products was also monitored continually outside the Beverley Control Room.

The concentrations measured remained low and below the investigation level throughout the year. The average and maximum concentrations measured are given in Table 3-2.

Table 3-2: Radon Decay Product PAEC outside the Control Room

Month	PAEC (µJm ⁻³)	
	Average	Max
Jan 15	0.08	0.51
Feb 15	0.10	0.59
Mar 15	Lost Data	
Apr 15	0.08	0.53
May 15	0.07	0.41
Jun 15	0.06	0.32
Jul 15	0.05	0.28
Aug 15	0.16	0.34
Sep 15	0.05	0.36
Oct 15	0.05	0.31
Nov 15	0.05	0.26
Dec 15	0.05	0.39

3.2 Long Lived Alpha Activity

Long Lived Alpha Activity (LLAA) sampling was conducted throughout the Plant controlled, supervised and clean areas and in the Wellfield. Monitoring was conducted according to the approved SOP² and frequencies. Details of the average, maximum and minimum concentrations at locations around the site, in the controlled area and for personal monitoring of operators are given in Table 3-3, Table 3-4 and Table 3-5 respectively. Trends of annual averages since commencement of operations are presented in Figure 3-2, Figure 3-3 and Figure 3-4.

Long Lived Alpha Activity in dust monitoring conducted in the Plant, Wellfield and other areas of the site remain low. The dust management programs detailed in the radiation management plans are thus considered sufficient to ensure doses via this pathway remain as low as reasonably achievable.

Table 3-3: LLAA Concentrations from Dust at the Plant and Wellfield

Location	LLAA (Bqm ⁻³)				
	Average	Max	Min	Std Dev	Number
Environmental	0.03	0.12	0.00	0.04	11
Beverley FLT	0.04	0.11	0.01	0.05	4
Other	0.02	0.04	0.00	0.02	4
Plant Clean	0.02	0.09	0.00	0.02	68
Plant Supervised	0.03	0.12	0.00	0.03	151
Wellfield	0.03	0.09	0.00	0.03	22

The average and maximum dust concentrations in all the above areas remained low.

Table 3-4: LLAA Concentrations from Dust in the Controlled Area

Location	LLAA (Bqm ⁻³)				
	Average	Max	Min	Std Dev	Number
Drier *	0.84	2.98	0.01	0.59	62
Drier security room	0.04	0.19	0.00	0.04	26
Packing room *	1.08	3.78	0.42	0.76	25
Packing Warehouse	0.03	0.07	0.00	0.02	26

* Airstream helmets are worn by all personnel entering the drier and packing room
Protection factor is not included but would reduce concentrations by 10 times

Table 3-5: LLAA Concentrations from Personal Monitoring of Work

Type	LLAA (Bqm ⁻³)				
	Average	Max	Min	Std Dev	Number
Drier Operator *	0.17	0.55	0.00	0.17	50
Maintenance	0.04	1.11	0.00	0.12	82
Plant	0.09	0.83	0.00	0.14	38
Wellfield	0.04	0.12	0.00	0.04	11
Cleaner	0.04	0.05	0.02	0.02	3

² Personal and Area Dust Monitoring, Standard Operating Procedure RAD 05, Heathgate, October 2014

Document Number	Date Issued	Authorised by	Page No.
Bev-Report.213	16 February 2016	S. Kutty	10 of 22

* Airstream Helmets are worn by these operators
 Protection factor is not included but would reduce concentrations by 10 times

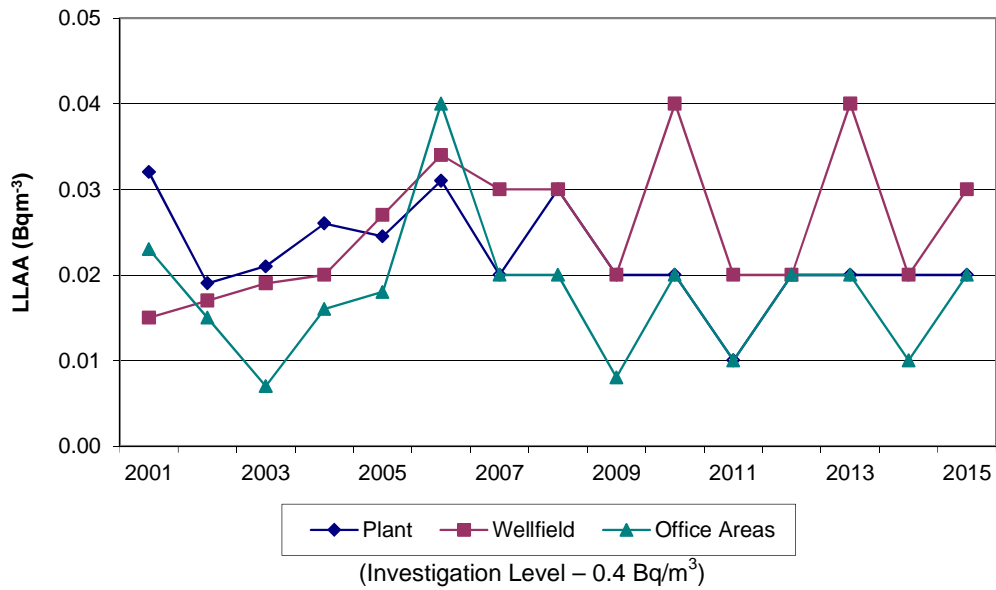


Figure 3-2: LLAA Concentration in Dust Monitoring Trends - Supervised and Office Areas

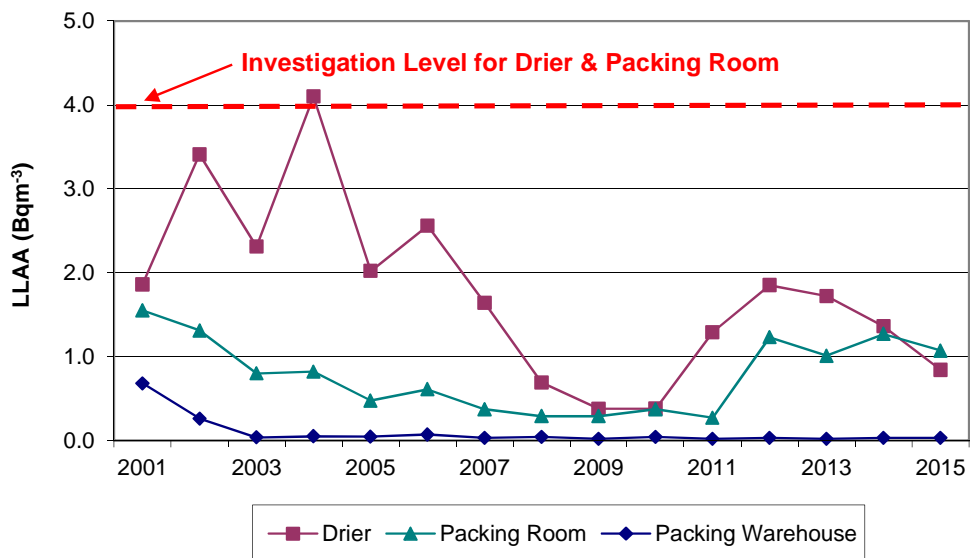


Figure 3-3: LLAA Concentration in Dust Monitoring Trends - Controlled Areas

Document Number	Date Issued	Authorised by	Page No.
Bev-Report.213	16 February 2016	S. Kuttly	11 of 22

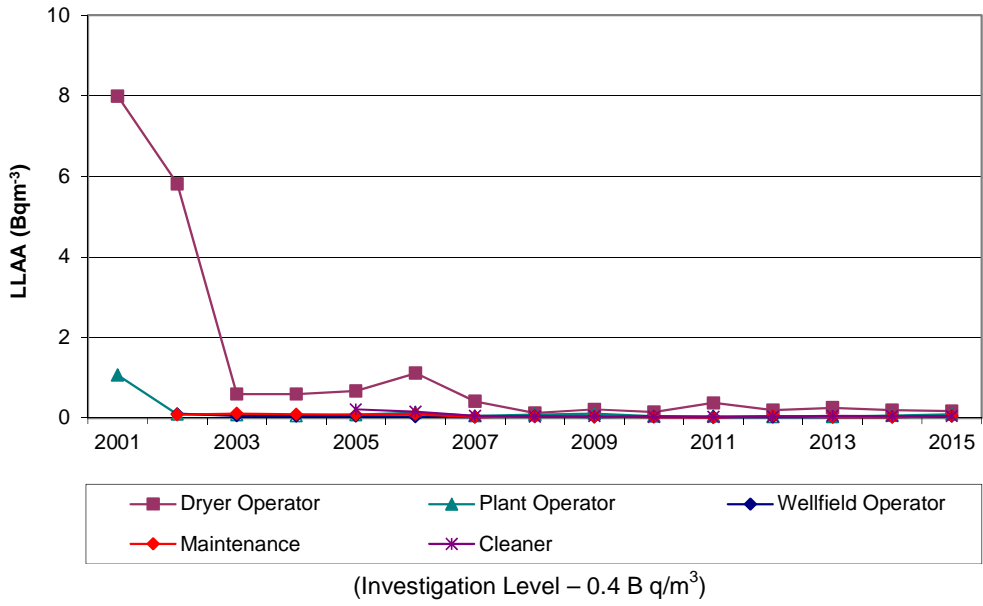


Figure 3-4: LLA Concentration in Dust Monitoring Trends - Personal Monitoring

3.3 External Gamma Dose Rate

3.3.1 Area Gamma Dose Rate Surveys

External gamma dose rate surveys were conducted throughout all work areas in the Plant and Wellfield. Monitoring was conducted according to the approved SOP³.

Details of the average, maximum and minimum dose rates at each location are given in Table 3-6. Trends in annual average dose rates since commencement of operations are presented in Figure 3-5.

Average gamma dose rates remained consistent throughout the year.

Table 3-6: Gamma Dose Rate Survey Results for the Plant and Wellfield

Location	Gamma Dose Rate ($\mu\text{Sv/h}$)				
	Average	Max	Min	Std Dev	Number
Drilling	0.42	2.00	0.02	0.57	38
Plant Clean	0.21	0.40	0.05	0.09	48
Plant Controlled	0.93	8.00	0.20	1.51	26
Plant Supervised	1.69	10.0	0.05	2.19	66
Wellfield	3.05	35.0	0.04	5.33	88

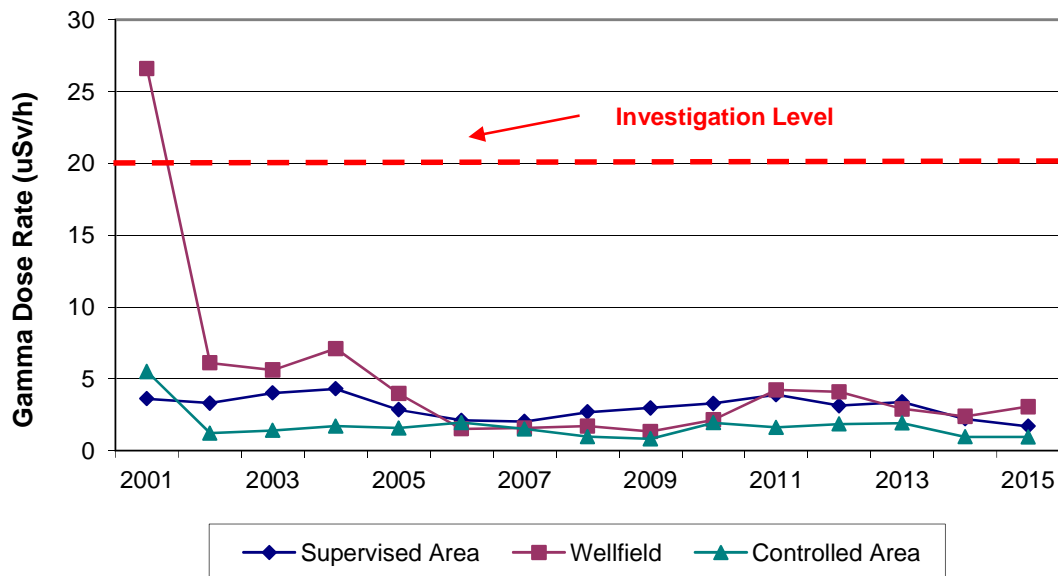


Figure 3-5: Gamma Dose Rate Monitoring Trend

³ Routine Gamma Dose rate Survey, Standard Operating Procedure RAD 01, Heathgate, October 2014

3.3.2 Thermoluminescent Dosimeter Results

Thermoluminescent Dosimeter (TLD) badges are issued to all permanent staff and long term contractors at the Beverley Site. They are also issued to temporary contractors who may be undertaking work in areas of higher than usual gamma dose rates.

Details of the average, maximum and minimum gamma dose on TLD badges for each workgroup are given in Table 3-7. Trends in annual average gamma doses since commencement of operations are presented in Figure 3-6. These average results are hourly weighted for each workgroup then allocated as an hourly dose rate to personnel who have either lost their badges or have not yet been issued with a badge. The final gamma dose statistics, including allocated doses, are presented in Figure 5-1.

Average TLD badge doses remained consistently low.

Table 3-7: TLD Badge Dose by Work Group

Work Group	Gamma Dose (mSv)			
	Average	Max	Min	Number
Production	0.29	1.71	0.00	81
Maintenance	0.35	1.91	0.00	41
Geology & Drilling	0.01	0.09	0.00	100
Projects	0.09	0.36	0.00	10
Other	0.08	0.30	0.00	15
Contractors	0.05	0.34	0.00	30

- * Production Personnel – Plant and Wellfield Operators, laboratory staff and supervisors
- Geology & Drilling – Drillers, geologists and support staff
- Others – Environment, Safety, Radiation and other office based staff
- Contractors – All site contractors with exception of drillers
- Projects – Construction personnel.

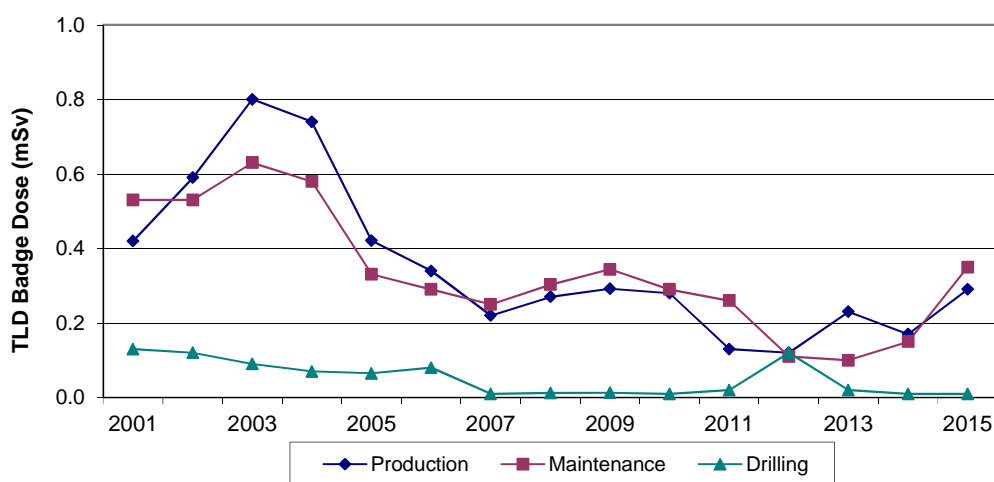


Figure 3-6: TLD Badge Dose Trends

3.4 Alpha Surface Contamination

Alpha surface contamination surveys were conducted in the Crib Rooms, Control Rooms, Offices, Change Rooms, Plants and Wellfields. Monitoring was conducted according to the approved SOP⁴.

Details of the contamination monitoring conducted in the Plant, Wellfield and Clean Areas are given in Table 3-8. Trends in annual average surface contamination values are presented in Figure 3-7.

Regular pressure cleaning is conducted in the plant supervised and controlled areas to reduce the surface contamination levels.

Table 3-8: Alpha Surface Contamination Survey Results for Plant and Wellfield

Location	Alpha Surface Contamination (Bqcm ⁻²)				
	Average	Max	Min	Std Dev	Number
Drilling	0.04	0.53	0.01	0.07	187
Other	0.00	0.13	0.00	0.01	142
Plant Clean	0.05	1.60	0.00	0.11	386
Plant Controlled	1.85	21.3	0.01	2.99	484
Plant Supervised	1.10	24.0	0.00	2.25	485
Wellfield	0.64	5.33	0.01	0.72	230

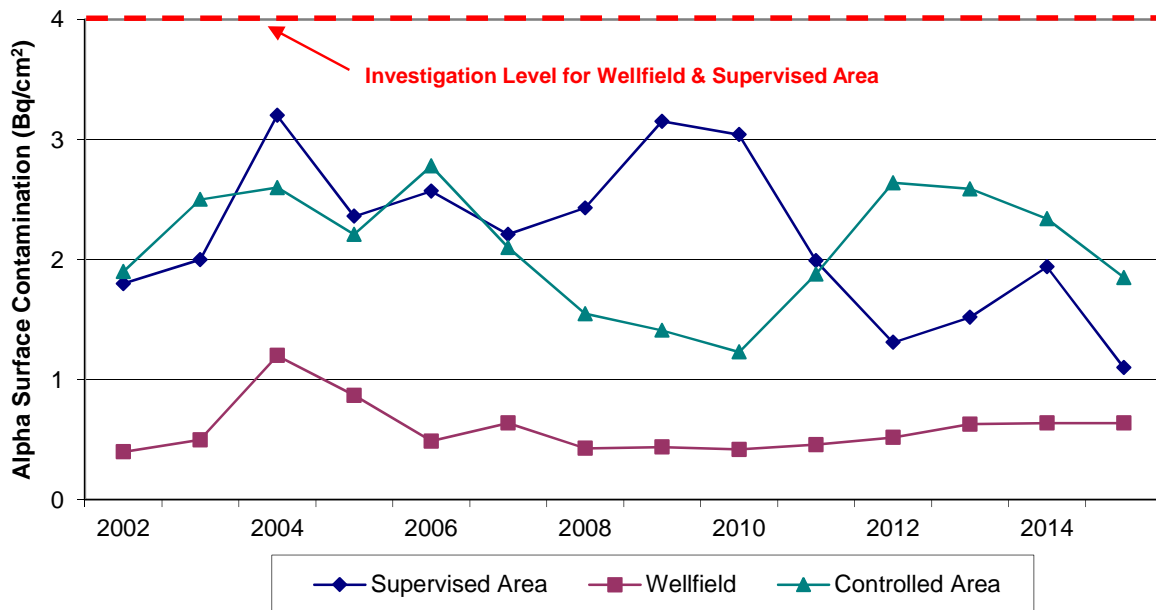


Figure 3-7: Alpha Surface Contamination Trends

⁴ Alpha Surface Contamination Monitoring, Standard Operating Procedure RAD 07, Heathgate, October 2014

4 OCCUPATIONAL DOSE ESTIMATION

This chapter presents the results of annual occupational dose calculations for 2015. Dose assessment methodology is presented in Appendix 1 and is based on the 1994 ICRP 68 and 1996 IAEA Safety Series 115 methodology.

5 DOSE ASSESSMENT

During the year, there were a total of 268 employees and contractors working at the Beverley and Beverley North Sites. The total effective dose descriptive statistics for these employees are given in Table 5-1. Trends of the average and maximum dose since commencement of operations are presented in Figure 5-1.

Table 5-1: Total Effective Dose Statistics

Statistic	Value
Average Dose (mSv)	0.39
Maximum Dose (mSv)	2.68
Minimum Dose (mSv)	0.00
Standard Deviation	0.44
Number of Employees	268
Dose limit (mSv)	20

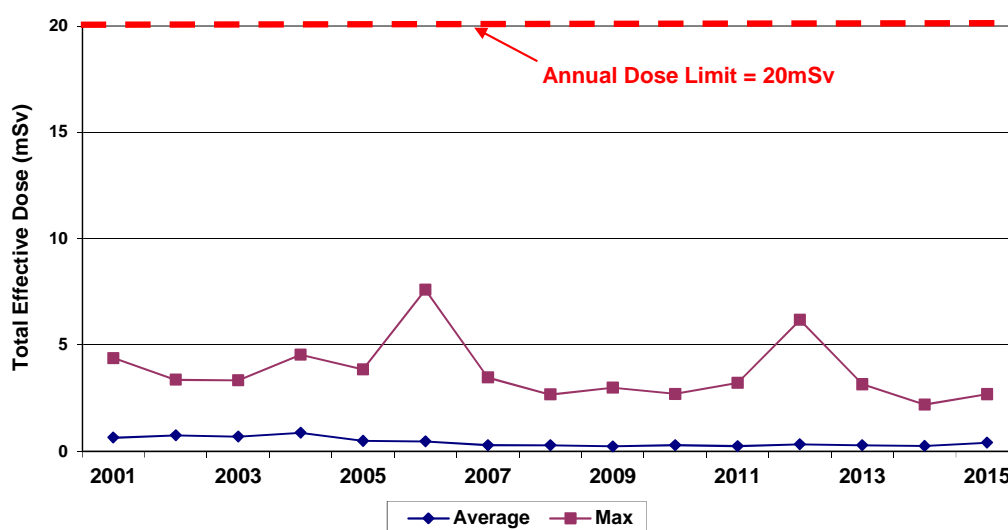


Figure 5-1: Total Effective Dose Trends

Employees and contractors were assigned to various work groups based on their major tasks. The average and maximum effective doses to each of these work groups from each of the exposure pathways are presented in Table 5-2: Average and Maximum Effective Dose for Exposure Pathways by Work Group and the average is presented in Figure 5-2.

Doses to employees at the Beverley and Beverley North Sites remained consistently low and below all applicable limits.

Table 5-2: Average and Maximum Effective Dose for Exposure Pathways by Work Group

Work Group *	LLAA (mSv)		RnD (mSv)		Gamma (mSv)		Number
	Average	Max	Average	Max	Average	Max	
Production	0.26	0.82	0.12	0.19	0.29	1.71	78
Maintenance	0.13	0.24	0.11	0.18	0.38	1.91	41
Geology & Drilling	0.07	0.15	0.10	0.22	0.01	0.09	98
Projects	0.11	0.14	0.14	0.17	0.12	0.36	9
Other	0.10	0.13	0.12	0.16	0.06	0.17	13
Contractors	0.07	0.17	0.08	0.21	0.04	0.19	29

* Production – Plant and Wellfield operators, laboratory staff and supervisors
 Geology & Drilling – Drillers, geologists and support staff
 Others – Environment, Safety, Radiation and other office based staff
 Contractors – All site contractors with exception of drillers
 Projects – Construction personnel

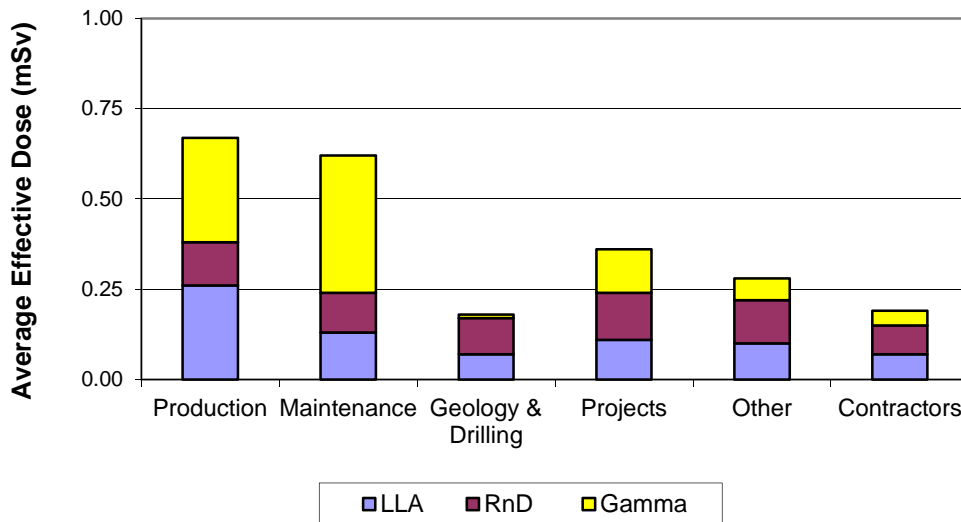


Figure 5-2: Average Total Effective Dose to each Workgroup from each Pathway

6 ADEQUACY AND EFFECTIVENESS OF EQUIPMENT AND PROCEDURES

The average and maximum doses received by workers at the Beverley and Beverley North Mine Sites during the year remained well below the statutory limits. The average dose received by employees and contractors at the Beverley and Beverley North Sites is lower than the statutory limit for members of the public.

The policies and procedures were under constant review to ensure that the doses to employees remain As Low As Reasonably Achievable (ALARA). Some of the examples for the year ending 31 December 2015 are given below:

- Acquired 3 new continuous radon daughter monitors to improve monitoring
- Acquired a gamma survey meter, and confined space monitoring devices
- Organized radiation safety training and licensing examinations utilizing the services of an external trainer. More persons are now licensed to handle portable XRF units, logging tools and laboratory XRF equipment
- More employees are now trained and licensed to have RSO qualifications
- Conducted several sessions of radiation safety training to impart radiation safety knowledge to permanent, contract and casual employees
- Updated the radiation safety training program
- Better procedures and equipment were introduced to improve the way confined space entries are carried out. This helps to minimise the associated radiation exposure
- Employee safety meetings and everyday morning tool box meetings were used as a platform to discuss the radiation safety issues and implement corrective actions when required
- Supervisors Safety Meetings were used to discuss radiation safety related items and to implement corrective actions.

Document Number	Date Issued	Authorised by	Page No.
Bev-Report.213	16 February 2016	S. Kuttly	18 of 22

7 CONCLUSIONS

The results of the Beverley and Beverley North Uranium Mines Radiation Monitoring Program have shown that no employee was exposed to unacceptable levels of radiation during 2015.

Doses received by employees and contractors working at the Beverley and Beverley North sites remain well below all statutory limits. The Radiation Management Plans and associated site procedures like the Radiation Work Permit system have also ensured doses have remained As Low As Reasonably Achievable.

8 REFERENCES

1. Beverley Uranium Mine Radiation Management Plan, Heathgate Resources Pty Ltd, December 2010.
2. Code of Practice on Radiation Protection and Radioactive Waste Management in Mining and Mineral Processing (2005) ARPANSA (RPS 1)
3. IAEA Safety Series No. 115, Basic Safety Standards for the Protection Against Ionizing Radiation and for the Safety of Radiation Sources, IAEA, 1996
4. ICRP 68, Dose Coefficients for Intakes of Radionuclides by Workers, Ann. ICRP 24 (4), 1994

Document Number	Date Issued	Authorised by	Page No.
Bev-Report.213	16 February 2016	S. Kuty	19 of 22

APPENDIX 1

Occupational Dose Assessment Methodology

Document Number	Date Issued	Authorised by	Page No.
Bev-Report.213	16 February 2016	S. Kuttly	20 of 22

METHOD

Total effective dose was calculated as the sum of the three exposure pathways as detailed in the Code of Practice on Radiation Protection and Radioactive Waste Management in Mining and Mineral Processing, 2005.

- Inhalation of Long Lived Alpha Activity in Dust
- Inhalation of Radon Decay Products
- External exposure to Gamma Radiation.

Inhalation of Long Lived Alpha Activity in Dust.

The effective dose due to the inhalation of Long Lived Alpha Activity (LLAA) in Dusts has been calculated from the following equation.

$$E_{LLAA} = [LLAA] \cdot DCF \cdot BR \cdot IT$$

Where:

E_{LLAA}	=	Effective dose due to inhalation of LLAA (mSv)
[LLAA]	=	Average Concentration of LLAA ($Bq\ m^{-3}$)
DCF	=	Dose conversion factor (mSv/Bq)
BR	=	Breathing Rate ($1.2\ m^3\ h^{-1}$)
IT	=	Inhalation Time (h).

The dose conversion factor used for the Beverley Uranium Mine is 0.0019 mSv/Bq, obtained from IAEA Safety Series 115³ using the default AMAD of 5 mm and a solubility class of M.

Doses for workgroups other than Geology and Drilling, Contractors and HSSE/Admin are calculated monthly from the average of all personal dust monitoring conducted during the month for each workgroup and the hours spent by each employee in that workgroup. Time information was taken from the “In Flight” database where the onsite working time of all employees is recorded. No allowance for any respiratory protection that may have been worn has been made. The lack of this allowance for respiratory protection factor gives a slight overestimate in the drier operator dose, however the majority of their shift is spent in clean areas where no respirator is worn and the dust sample is still being collected. This method was considered the closest estimate obtainable.

Dose to the Geology and Drilling workgroup is taken from the average of area dust monitoring in the wellfield and drilling areas for the months and hours worked. Time information is obtained from the “In Flight” database.

Dose to the Contractors and HSSE/Admin workgroups is taken from the average of all area monitoring conducted around site for the month. Area sampling conducted in the Drier and packaging areas is divided by the respiratory protection factor 10 before being averaged since these areas require the compulsory wearing of an airstream helmet. Hours are obtained from the “In Flight” database.

Document Number	Date Issued	Authorised by	Page No.
Bev-Report.213	16 February 2016	S. Kuttly	21 of 22

Inhalation of Radon Decay Products

The committed effective dose due to the inhalation of radon decay products (RnD) has been calculated from the following equation.

$$E_{RnD} = PAEC \cdot DCF \cdot IT$$

Where:

E_{RnD}	=	Effective dose due to inhalation of RnD (mSv)
PAEC	=	Average Potential Alpha Energy Concentration (μJm^{-3})
DCF	=	Dose conversion factor (0.0014 mSv/ $\mu\text{Jm}^{-3}/\text{h}$)
IT	=	Inhalation Time (h).

Doses were calculated monthly from the average PAEC in each work area and the time spent by each employee in that area.

External Exposure to Gamma Radiation

The external exposure to gamma radiation is monitored using Thermoluminescent Dosimeter (TLD) badges supplied by the Australian Radiation Protection and Nuclear Safety Agency (ARPANSA). Badges are issued to all employees and longer-term contractors for a period of three months. Any short-term contractors or employees who lose their badges are assigned a pro-rata dose based on their work group average and total hours.

Badges are worn close to the employee's body for the duration of the shift and stored on a control board at all other times.

Document Number	Date Issued	Authorised by	Page No.
Bev-Report.213	16 February 2016	S. Kuty	22 of 22