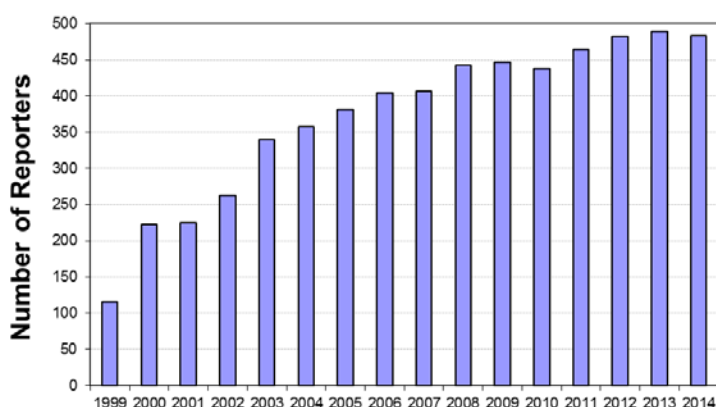


# Environment Protection Authority 2015 NPI Newsletter



## NPI in South Australia

The South Australian Environment Protection Authority (EPA) received a total of 483 reports for the 2013–14 reporting year which is a small decrease from the previous year's 489 reports.



## Use of NPI data

Have you ever wondered what happens to your NPI data and how it is used? NPI data can be searched by [map](#) or [form](#) on the website. Data is used by the community, for benchmarking, research, air modelling and evidence-based policy.

### **EPA load based licensing**

The EPA uses NPI data to calculate the resource efficiency fee (REF) for [load based licensing](#).

### **2013 State of the Environment Report**

NPI data were used in the 2013 State of the Environment Report to show emission trends of key pollutants under [Air pollution](#).

### **Open Data**

The complete set of [SA 2012–13 and 2013–14 industry emission data](#) can be found on DataSA website.

## New facilities

The EPA would like to welcome our new reporting companies:

- Holcim (Australia) Pty Ltd – Kulpara Sand Pit
- Graincorp Liquid Terminals Australia Pty Ltd – Pacific Terminals (Australia) Pty Ltd
- Downer Edi Works Pty Ltd – Wingfield
- Beach Energy – Windmill Oilfield
- Inghams Enterprises Pty Limited – Nairne
- Luturn Pty Ltd
- Jurlique International
- Terminals Pty Ltd.

Thank you to all reporters for fulfilling your reporting requirements and contributing to the important resource of NPI data.

## Industry guidance materials

Prior to commencing your NPI report, please check which emission estimation technique (EET) and manuals are relevant to your facility's operations and for any relevant updates. [EET manuals](#) are available from the NPI website.

The Australian Government has been progressively reviewing the EET manuals including updating emission factors. The revised emission factors have been incorporated into new calculation tools, available within the Online Reporting System (ORS).

The following commonly used manuals and guidance documents have been updated:

- Ferrous foundries (January 2014)
- Malt manufacturing (October 2014)
- NPI Guide (December 2014).

If there are any manuals that you would like to see updated, please contact the [NPI team](#). Any suggestions will be forwarded to the Commonwealth to help determine the priority of manuals that are revised.

## Data release and submission

### 2013–14 data publication

The 2013–14 data was released on the website on 31 March 2015.

### 2014–15 data submission

- Calendar year reports (1 January–31 December 2014) were due on 31 March 2015.
- Financial year reports (1 July 2014–30 June 2015) are due on 30 September 2015.

## EPA licence-holders

For NPI reporters who also hold EPA licences and have authorised their NPI data to be used in the calculation of their resource efficiency fee (REF), please note that you are required to report emissions to the nearest 100 kg.

## Substance usage

Reporting usage of Category 1, 1a and 1b substances is not mandatory. However reporters are encouraged to include usage in their reports as it assists the NPI Team during the validation process, by allowing us to confirm that reporting thresholds have been tripped as well as to understand why emissions of certain substances have trended up or down relative to last year's report.

## Tips for submitting your report on time

Start your report early and ensure that NPI reporting is part of your internal procedures. This may mean including NPI reporting as part of a job description and writing an internal operating procedure on how to write an NPI report.

All NPI correspondence including reminder emails are directed to the technical contact. As such it is important that you inform the NPI team if your technical contact has left your company or changed roles.

The EPA recommends using the Online Reporting System (ORS) to ensure that your report is received on time. If you choose to submit a paper report, ensure that you send it with enough time to reach the EPA office (located in Adelaide) by the required due date.

## Validation process

You are required under the *Environment Protection (NPI) Policy 2008* to keep records of supporting information used to generate NPI reports for five years. Please note that while we are allowed to seek such information, we are also bound by various legislative requirements to keep such information confidential.

If you are using calculation tools please ensure you keep an accurate record of the process configurations that were

used (eg use the 'print screen' button). This information may be requested by the NPI Team during validation.

Alternatively if you have developed spreadsheets (eg in Excel to generate NPI data), please submit these if requested.

Reporters are required to respond to significant changes in reported emissions and transfers relative to the previous reporting period. In general, reporters can do this by selecting simple explanations from the 'Emissions Data Validation' or 'Transfer Data Validation' screens in the ORS. Where a more detailed explanation would assist the NPI Team in validating a facility report, reporters are encouraged to fill out the 'Emission Notes' or 'Transfer Notes' section for such substances. This information is not published but assists the NPI Team greatly during validation. Alternatively, or in addition, reporters can provide a 'Confidential Statement'.

## Common reporting problems

Please check your spreadsheets and calculations carefully before submitting your report. Some common errors in reports include:

- emission factors are not updated
- incorrect units
- reporting emissions as a zero value (which is no longer accepted in NPI reports)
- emissions not split into point and fugitive sources
- Category 1 and 2b substances are reported although the thresholds have not been exceeded.

Additionally, we encourage all facilities with cleaner production activities or pollution control equipment to include these in their reports as an opportunity to gain positive recognition.

## Training

Training sessions for Online Reporting will be offered from **24–26 August 2015**. Please contact the NPI team to register your interest or get further information. Reporters can seek advice over the phone during business hours.

## Contact us

If you require any assistance in reporting or have any other queries please contact the NPI Team.

Telephone: (08) 8204 9095

Fax: (08) 8124 4676

Email: [npi@epa.sa.gov.au](mailto:npi@epa.sa.gov.au)

Web: [www.epa.sa.gov.au](http://www.epa.sa.gov.au)

Mail: NPI Team, Environment Protection Authority  
GPO Box 2607  
Adelaide SA 5001