

Golden Grove air quality summary report – April to May 2015

Issued June 2015

Introduction

One of the EPA's environmental goals is good quality air. To support this goal the EPA conducts ambient air quality monitoring at locations around the state.

This report contains a summary of the quarterly air quality based on data from the EPA's mobile monitoring station at Golden Grove. This station was deployed on 16 October 2014. The data, where applicable, is compared to the standards and goals set out in the National Environment Protection (Ambient Air Quality) Measure (NEPM).

Details on the NEPM, along with locations of monitoring stations and the parameters measured at each site can be found on the EPA [website](#):

To assist in interpreting the information provided the following formats have been implemented.

- Values represented in the graphs are the maximum concentration recorded for each day for the given averaging period. Concentrations that are larger than the maximum allowed in the standard are recorded as exceedences.
- Exceedence days in **BLACK** provide the total number of exceedence days for the year.
- Exceedence days in **RED** indicate an exceedence of the NEPM standard this current month.
- Exceedence days in **BOLD** indicate the total number of exceedence days for the year and indicate a breach of the NEPM goal. Bold can be either black or red and once a site has breached the goal all subsequent results for the year will be reported this way.

Pollution from particles is the great concern with emission from industrial sources, motor vehicles and on occasions, from planned burning, bushfires and dust storms.

Total suspended particulate matters (TSP) are particles with an equivalent aerodynamic diameter of less than 50 μm . TSP consists of a mixture of large and fine particles.

Large particle has an equivalent aerodynamic diameter of greater than 10 μm and is a source of nuisance.

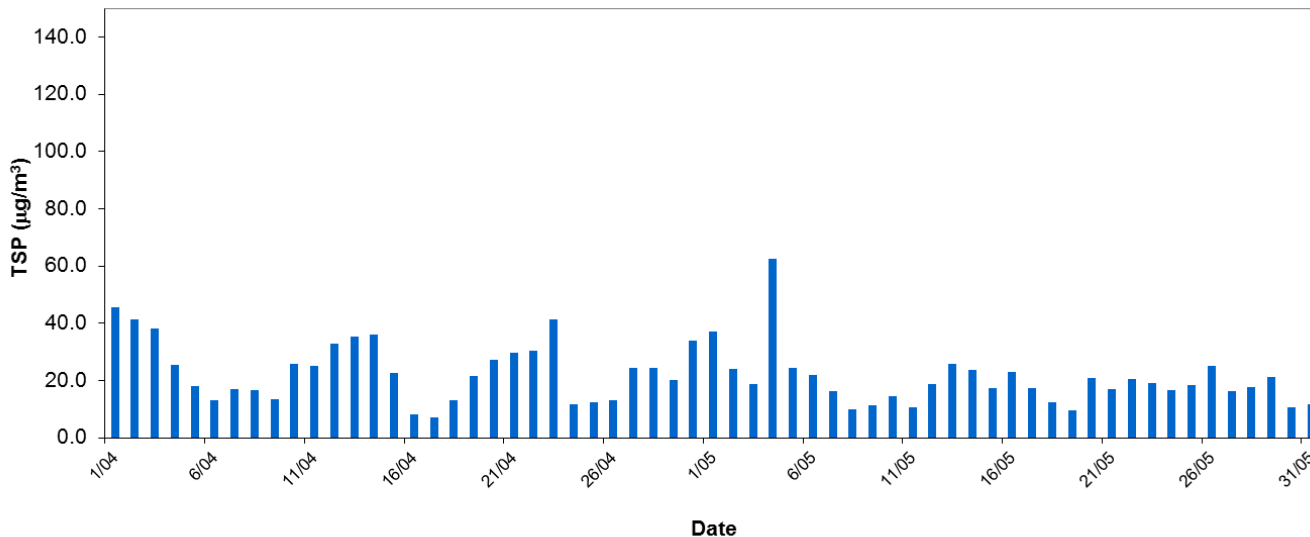
Fine particles are often a complex mixture of materials arising from many sources, but are generally grouped into two categories, called PM_{10} and $\text{PM}_{2.5}$, where the number gives an idea of the range of sizes of particles. Both are able to enter the lungs and are known to have health effects (see [particulate matter](#) for further information on the nature and effects of particles).

Meteorology conditions has great effect on particulate dispersion. Specifically, wind speed and direction influent the transport and dispersion of particulate matters.

1.1 Total suspended particles (TSP)

There is no 24-hour NEPM Standard for TSP particles. However, monitoring TSP can indicate the levels of visible nuisance dust in an area. TSP levels were quite moderate for this quarter, well below the WHO guideline of 120 µg/m³.

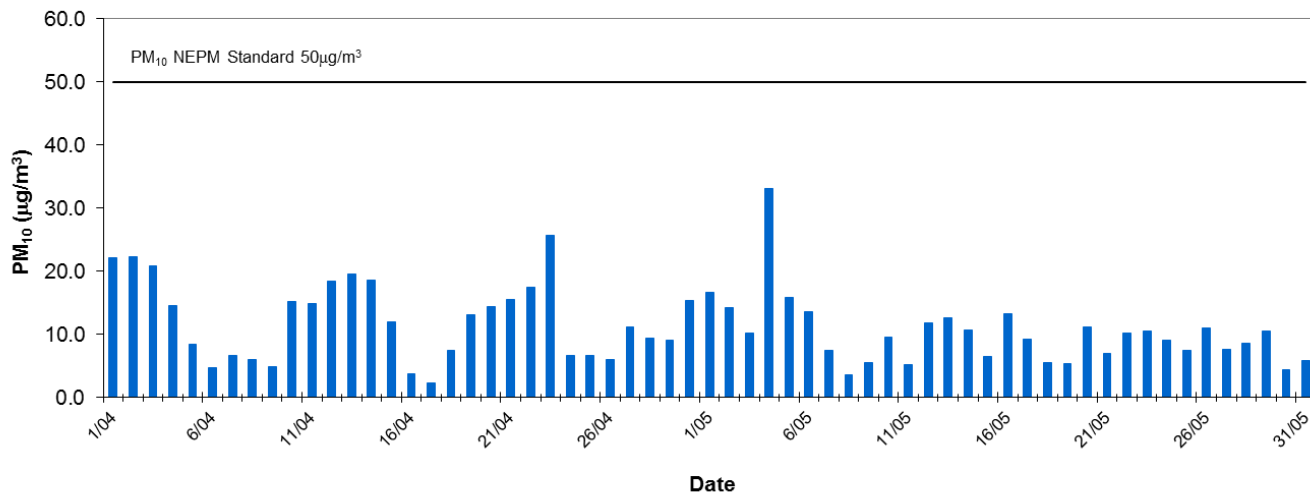
Golden Grove Daily Average TSP - April to May 2015



1.2 Particles (PM₁₀)

- The 24-hour NEPM Standard for PM₁₀ particles is 50 µg/m³. There was 0 exceedences at Golden Grove this reporting period.
- Total NEPM Exceedence days for 2014
Golden Grove: 1
- This is less than the NEPM Goal of 5 per year.

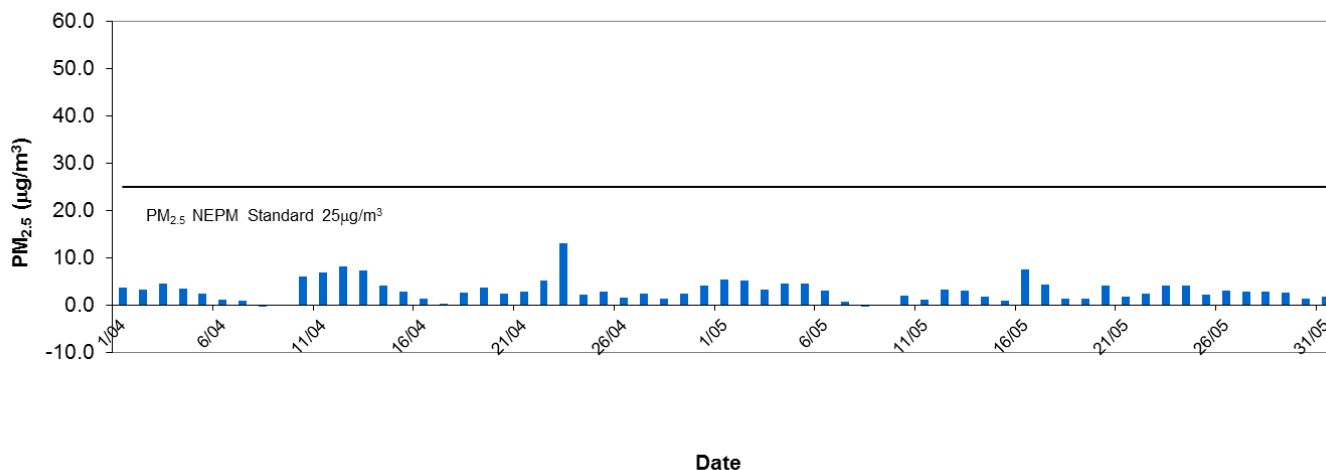
Golden Grove Daily Average PM10 - April to May 15



1.3 Particles (PM_{2.5})

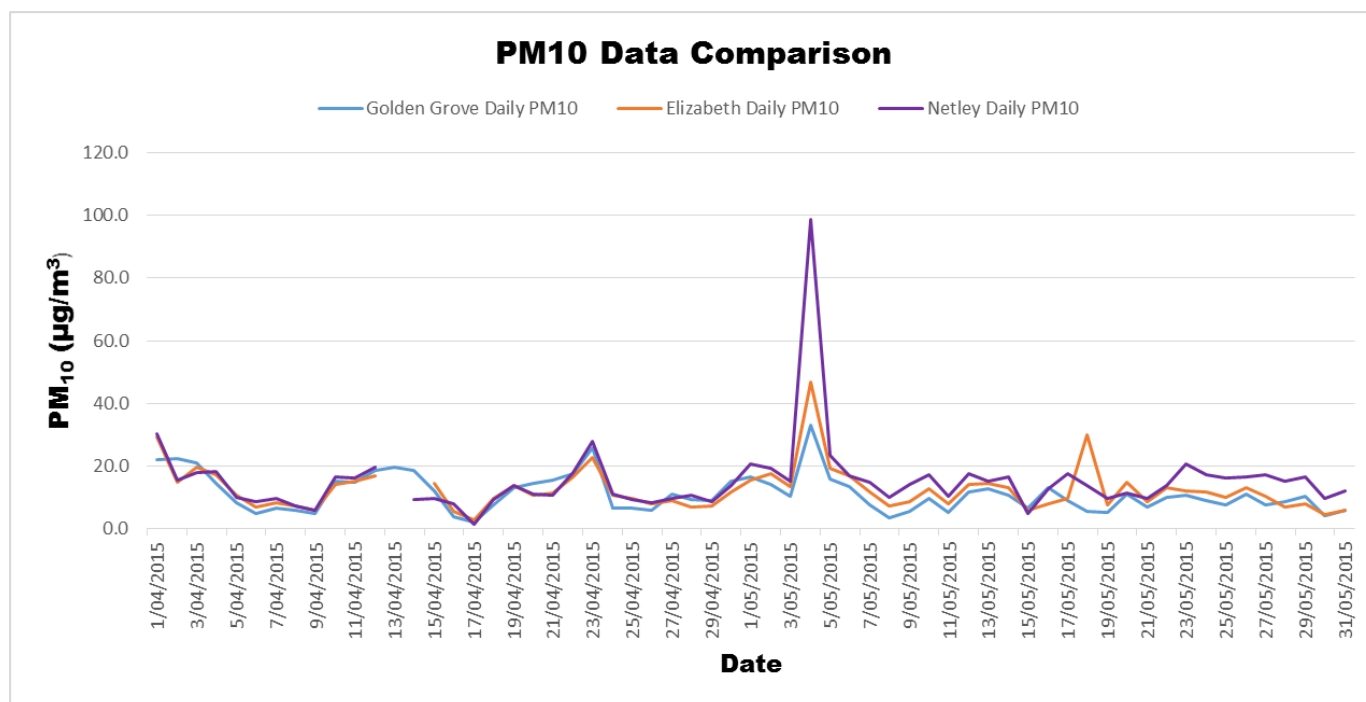
- The 24-hour NEPM Standard for PM_{2.5} particles is 25 µg/m³. There was 0 exceedences at Golden Grove in this reporting period.
- Total NEPM Exceedence days for 2014
 Golden Grove: 2
- This is less than the NEPM Goal of 5 per year.

Golden Grove Daily Average PM_{2.5} - April to May 15



1.4 PM₁₀ concentration comparison

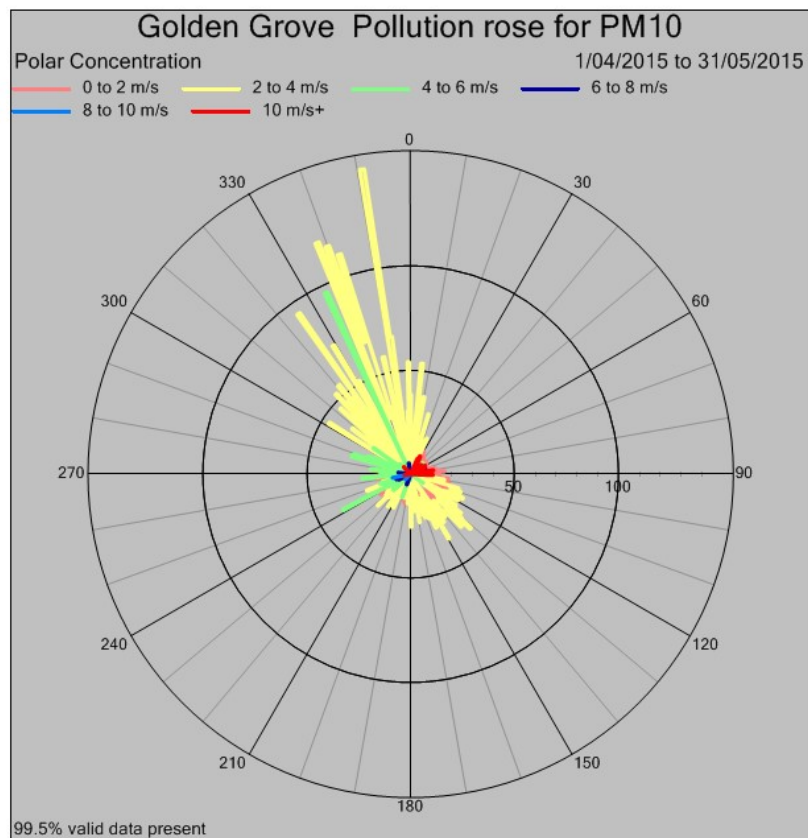
PM₁₀ data from Golden Grove, Elizabeth and Netley stations was presented in the below graph. The PM₁₀ concentration at the three sites was quite similar, except the dust storm event on 4th May 2015 when PM₁₀ at Netley exceeded the NEPM standard.



1.5 Meteorology and pollution rose

10-minute wind speed and direction data and PM₁₀ concentration were used for plotting pollution rose.

- In April, most often the wind was from north west direction with the strongest speed at 11.7 m/s. High PM₁₀ concentration was obtained when the wind blew from north west direction at the speed between 2 to 4 m/s.
- In May, the predominant wind was from north west with the strongest speed at 16.5 m/s. The majority of high PM₁₀ concentration was obtained when the wind blew from north west direction with wind speed between 2 to 4 m/s.



Further information

Legislation

[Online legislation](#) is freely available. Copies of legislation are available for purchase from:

Service SA Government Legislation Outlet
Adelaide Service SA Centre
108 North Terrace
Adelaide SA 5000

Telephone: 13 23 24
Facsimile: (08) 8204 1909
Website: <shop.service.sa.gov.au>
Email: <ServiceSAcustomerservice@sa.gov.au>

General information

Environment Protection Authority
GPO Box 2607
Adelaide SA 5001

Telephone: (08) 8204 2004
Facsimile: (08) 8124 4670
Freecall: 1800 623 445 (country)
Website: <www.epa.sa.gov.au>
Email: <epainfo@epa.sa.gov.au>
